

Stra8 Polyclonal Antibody

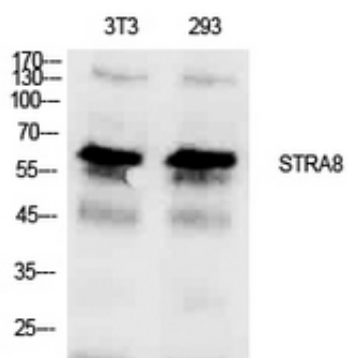
Catalog_no :	AT5557
Applications :	WB,ELISA
Reactivity :	Human
Category :	抗原抗体
Size :	100µg/50µg/20µg
Gene_name :	STRA8
Protein_name :	Stimulated by retinoic acid gene 8 protein homolog
Humangene_id :	346673
Humanswissprot_no :	Q7Z7C7
Mousegene_id :	
Mouseswissprot_no :	P70278
Ratgene_id :	
Ratswissprot_no :	
Immunogen :	The antiserum was produced against synthesized peptide derived from the Internal region of human STRA8. AA range:151-200
Specificity :	Stra8 Polyclonal Antibody detects endogenous levels of Stra8 protein.
Formulation :	Liquid in PBS containing 50% glycerol, 0.5% BSA and 0.02% sodium azide.
Source :	Rabbit
Dilution :	Western Blot: 1/500 - 1/2000. ELISA: 1/10000. Not yet tested in other applications.
Purification :	The antibody was affinity-purified from rabbit antiserum by affinity-chromatography using epitope-specific immunogen.
Concentration :	1 mg/ml
Storage_stability :	-20°C/1 year
Msds :	MSDS_Antibody.pdf



Other_name : STRA8; Stimulated by retinoic acid gene 8 protein homolog

Molecular Weight : 66KD

Product Images



Western Blot analysis of NIH-3T3, 293 cells using Stra8 Polyclonal Antibody. Antibody was diluted at 1:1000. Secondary antibody was diluted at 1:20000