



11 β -HSD1 Polyclonal Antibody

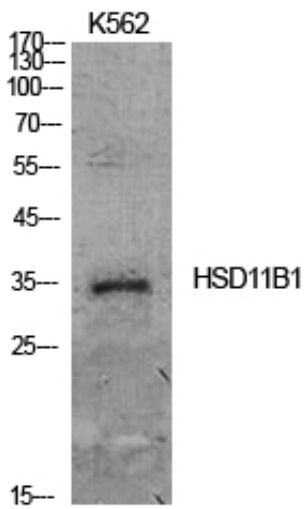
Catalog_no :	<u>AT5560</u>
Applications :	<u>WB,IHC-p,ELISA</u>
Reactivity :	<u>Human,Mouse,Rat</u>
Category :	<u>抗原抗体</u>
Size :	<u>100μg/50μg/20μg</u>
Gene_name :	<u>HSD11B1</u>
Protein_name :	<u>Corticosteroid 11-beta-dehydrogenase isozyme 1</u>
Humangene_id :	<u>3290</u>
Humanswissprot_no :	<u>P28845</u>
Mousegene_id :	<u>15483</u>
Mouseswissprot_no :	<u>P50172</u>
Ratgene_id :	<u>25116</u>
Ratswissprot_no :	<u>P16232</u>
Immunogen :	<u>Synthesized peptide derived from 11β-HSD1 . at AA range: internal</u>
Specificity :	<u>11β-HSD1 Polyclonal Antibody detects endogenous levels of 11β-HSD1 protein.</u>
Formulation :	<u>Liquid in PBS containing 50% glycerol, 0.5% BSA and 0.02% sodium azide.</u>
Source :	<u>Rabbit</u>
Dilution :	<u>Western Blot: 1/500 - 1/2000. IHC-p: 1:100-1:300. ELISA: 1/10000. Not yet tested in other applications.</u>
Purification :	<u>The antibody was affinity-purified from rabbit antiserum by affinity-chromatography using epitope-specific immunogen.</u>
Concentration :	<u>1 mg/ml</u>
Storage_stability :	<u>-20$^{\circ}$C/1 year</u>
Msds :	<u>MSDS_Antibody.pdf</u>



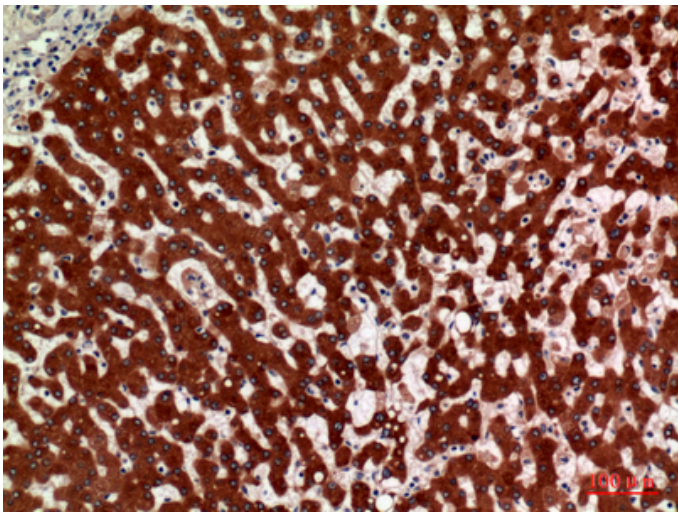
Other_name : HSD11B1; HSD11; HSD11L; Corticosteroid 11-beta-dehydrogenase isozyme 1; 11-beta-hydroxysteroid dehydrogenase 1; 11-DH; 11-beta-HSD1

Molecular Weight : 35KD

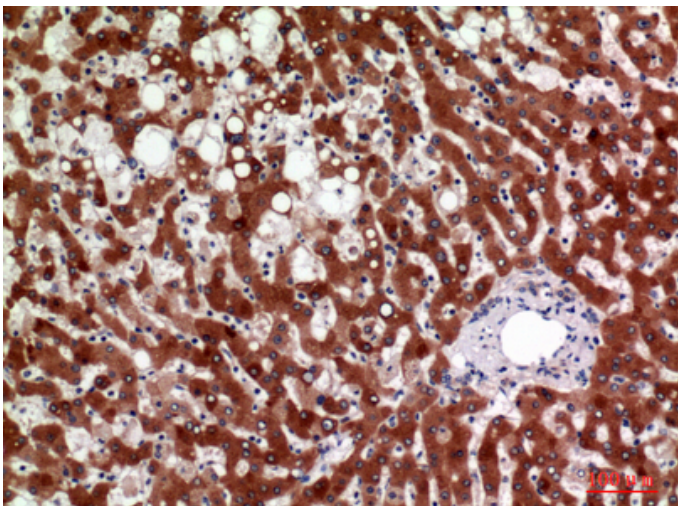
Product Images



Western Blot analysis of K562 cells using 11 β -HSD1 Polyclonal Antibody. Antibody was diluted at 1:500. Secondary antibody was diluted at 1:20000

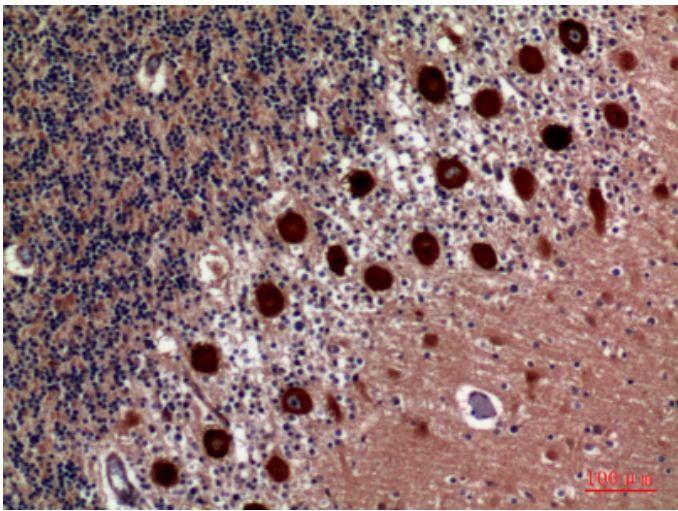
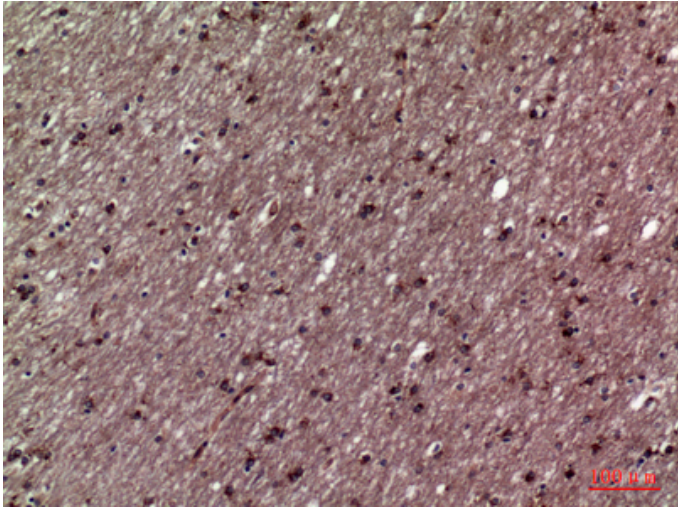


Immunohistochemical analysis of paraffin-embedded human-liver, antibody was diluted at 1:100



Immunohistochemical analysis of paraffin-embedded human-liver, antibody was diluted at 1:100

Immunohistochemical analysis of paraffin-embedded human-brain, antibody was diluted at 1:100



Immunohistochemical analysis of paraffin-embedded human-brain, antibody was diluted at 1:100