

## AID Polyclonal Antibody

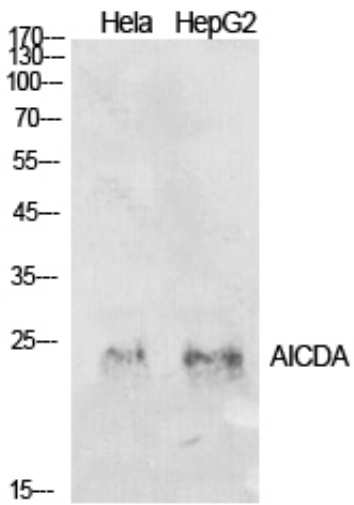
Catalog_no :	AT5566
Applications :	WB,IHC-p,ELISA
Reactivity :	Human,Mouse,Rat
Category :	抗原抗体
Size :	100µg/50µg/20µg
Gene_name :	AICDA
Protein_name :	Activation-induced cytidine deaminase
Humangene_id :	<a href="#">57379</a>
Humanswissprot_no :	<a href="#">Q9GZX7</a>
Mousegene_id :	<a href="#">11628</a>
Mouseswissprot_no :	<a href="#">Q9WVE0</a>
Ratgene_id :	
Ratswissprot_no :	
Immunogen :	The antiserum was produced against synthesized peptide derived from the Internal region of human AICDA. AA range:81-130
Specificity :	AID Polyclonal Antibody detects endogenous levels of AID protein.
Formulation :	Liquid in PBS containing 50% glycerol, 0.5% BSA and 0.02% sodium azide.
Source :	Rabbit
Dilution :	Western Blot: 1/500 - 1/2000. IHC-p: 1:100-1:300. ELISA: 1/10000. Not yet tested in other applications.
Purification :	The antibody was affinity-purified from rabbit antiserum by affinity-chromatography using epitope-specific immunogen.
Concentration :	1 mg/ml
Storage_stability :	-20°C/1 year
Msds :	MSDS_Antibody.pdf



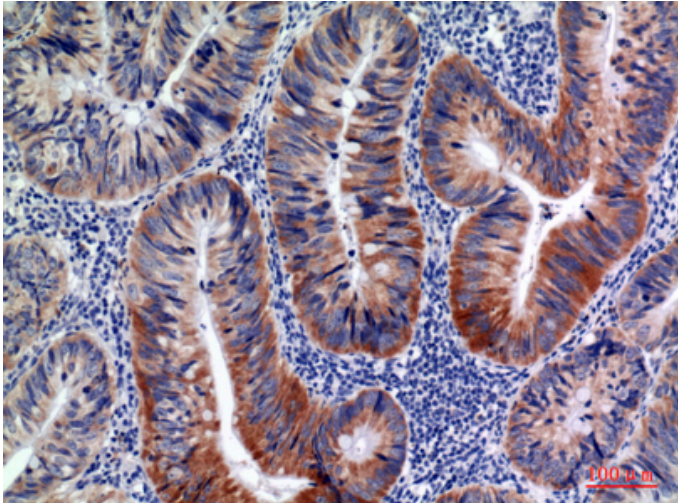
Other\_name : AICDA; AID; Activation-induced cytidine deaminase; Cytidine aminohydrolase

Molecular Weight : 24KD

## Product Images



Western Blot analysis of HeLa, HepG2 cells using AID Polyclonal Antibody.. Secondary antibody was diluted at 1:20000



Immunohistochemical analysis of paraffin-embedded human colon cancer, antibody was diluted at 1:100