

GABAA R α 1 Polyclonal Antibody

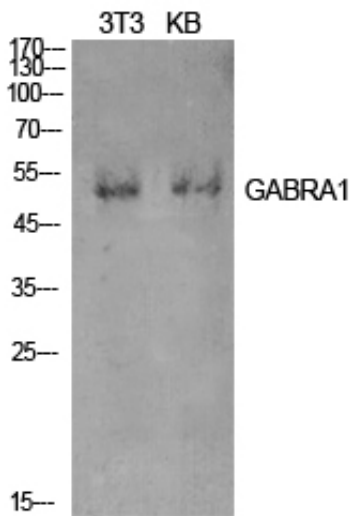
Catalog_no :	<u>AT5569</u>
Applications :	<u>WB,IHC-p,ELISA</u>
Reactivity :	<u>Human,Mouse,Rat</u>
Category :	<u>抗原抗体</u>
Size :	<u>100μg/50μg/20μg</u>
Gene_name :	<u>GABRA1</u>
Protein_name :	<u>Gamma-aminobutyric acid receptor subunit alpha-1</u>
Humangene_id :	<u>2554</u>
Humanswissprot_no :	<u>P14867</u>
Mousegene_id :	<u>14394</u>
Mouseswissprot_no :	<u>P62812</u>
Ratgene_id :	<u>29705</u>
Ratswissprot_no :	<u>P62813</u>
Immunogen :	<u>The antiserum was produced against synthesized peptide derived from the Internal region of human GABRA1. AA range:61-110</u>
Specificity :	<u>GABAA Rα1 Polyclonal Antibody detects endogenous levels of GABAA Rα1 protein.</u>
Formulation :	<u>Liquid in PBS containing 50% glycerol, 0.5% BSA and 0.02% sodium azide.</u>
Source :	<u>Rabbit</u>
Dilution :	<u>Western Blot: 1/500 - 1/2000. IHC-p: 1:100-1:300. ELISA: 1/10000. Not yet tested in other applications.</u>
Purification :	<u>The antibody was affinity-purified from rabbit antiserum by affinity-chromatography using epitope-specific immunogen.</u>
Concentration :	<u>1 mg/ml</u>
Storage_stability :	<u>-20°C/1 year</u>
Msds :	<u>MSDS_Antibody.pdf</u>



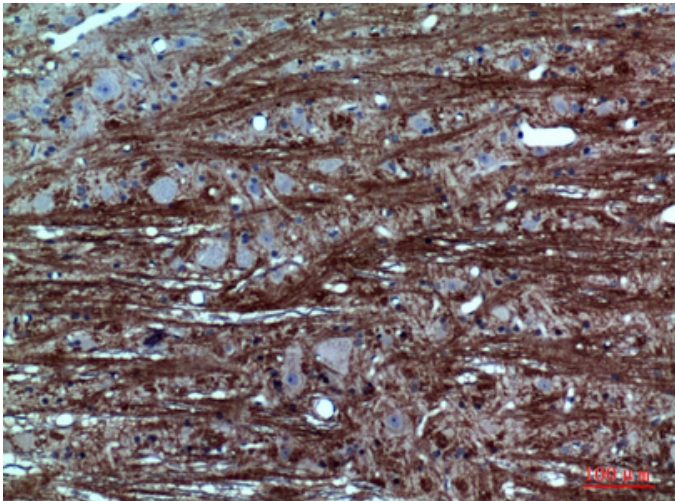
Other_name : GABRA1; Gamma-aminobutyric acid receptor subunit alpha-1; GABA(A) receptor subunit alpha-1

Molecular Weight : 50KD

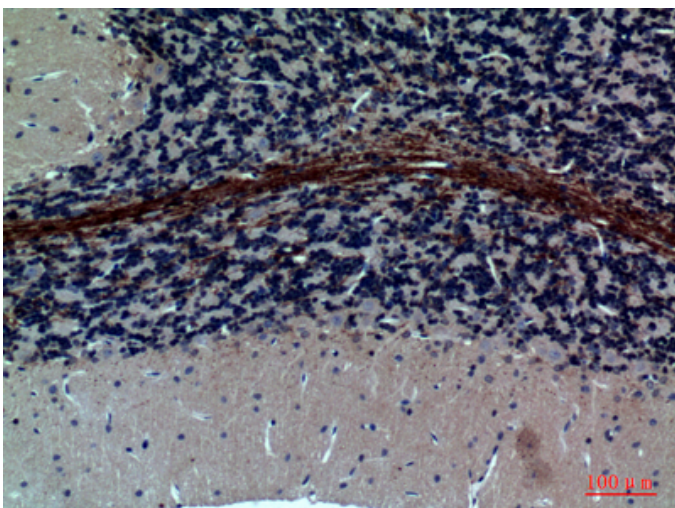
Product Images



Western Blot analysis of NIH-3T3, KB cells using GABAA R α 1 Polyclonal Antibody.. Secondary antibody was diluted at 1:20000



Immunohistochemical analysis of paraffin-embedded rat-brain, antibody was diluted at 1:100



Immunohistochemical analysis of paraffin-embedded rat-brain, antibody was diluted at 1:100

Immunohistochemical analysis of paraffin-embedded rat-brain, antibody was diluted at 1:100

