



PSGL-1 Polyclonal Antibody

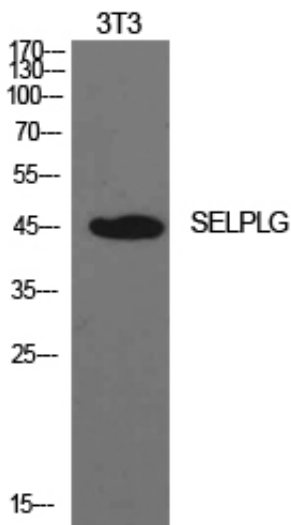
Catalog_no :	AT5572
Applications :	WB,IHC-p,ELISA
Reactivity :	Human
Category :	抗原抗体
Size :	100µg/50µg/20µg
Gene_name :	SELPLG
Protein_name :	P-selectin glycoprotein ligand 1
Humangene_id :	6404
Humanswissprot_no :	Q14242
Mousegene_id :	
Mouseswissprot_no :	Q62170
Ratgene_id :	
Ratswissprot_no :	
Immunogen :	The antiserum was produced against synthesized peptide derived from the N-terminal region of human SELPLG. AA range:1-50
Specificity :	PSGL-1 Polyclonal Antibody detects endogenous levels of PSGL-1 protein.
Formulation :	Liquid in PBS containing 50% glycerol, 0.5% BSA and 0.02% sodium azide.
Source :	Rabbit
Dilution :	Western Blot: 1/500 - 1/2000. IHC-p: 1:100-1:300. ELISA: 1/10000. Not yet tested in other applications.
Purification :	The antibody was affinity-purified from rabbit antiserum by affinity-chromatography using epitope-specific immunogen.
Concentration :	1 mg/ml
Storage_stability :	-20°C/1 year
Msds :	MSDS_Antibody.pdf



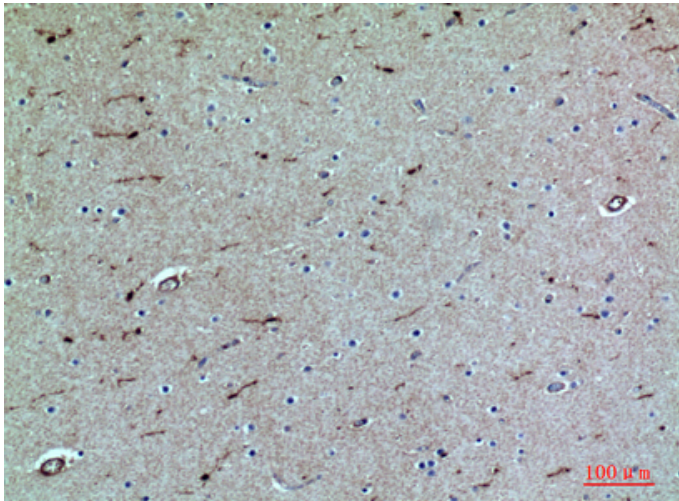
Other_name : SELPLG; P-selectin glycoprotein ligand 1; PSGL-1; Selectin P ligand; CD162

Molecular Weight : 45KD

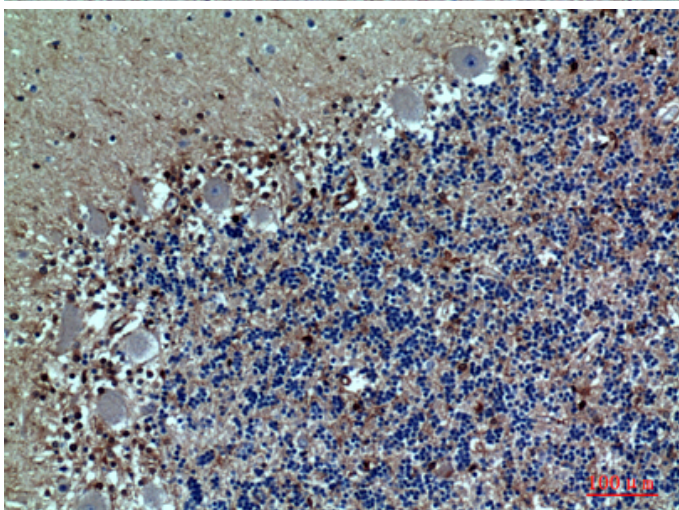
Product Images



Western Blot analysis of NIH-3T3 cells using PSGL-1 Polyclonal Antibody.. Secondary antibody was diluted at 1:20000



Immunohistochemical analysis of paraffin-embedded human-brain, antibody was diluted at 1:100



Immunohistochemical analysis of paraffin-embedded human-brain, antibody was diluted at 1:100