

SOD-2 Polyclonal Antibody

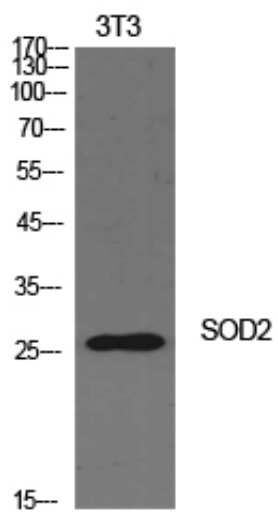
Catalog_no :	<u>AT5575</u>
Applications :	<u>WB,IHC-p,ELISA</u>
Reactivity :	<u>Human,Mouse,Rat</u>
Category :	<u>抗原抗体</u>
Size :	<u>100µg/50µg/20µg</u>
Gene_name :	<u>SOD2</u>
Protein_name :	<u>Superoxide dismutase [Mn] mitochondrial</u>
Humangene_id :	<u>6648</u>
Humanswissprot_no :	<u>P04179</u>
Mousegene_id :	<u>20656</u>
Mouseswissprot_no :	<u>P09671</u>
Ratgene_id :	<u>24787</u>
Ratswissprot_no :	<u>P07895</u>
Immunogen :	<u>The antiserum was produced against synthesized peptide derived from the Internal region of human SOD2. AA range:91-140</u>
Specificity :	<u>SOD-2 Polyclonal Antibody detects endogenous levels of SOD-2 protein.</u>
Formulation :	<u>Liquid in PBS containing 50% glycerol, 0.5% BSA and 0.02% sodium azide.</u>
Source :	<u>Rabbit</u>
Dilution :	<u>IHC-p: 100-300.Western Blot: 1/500 - 1/2000. ELISA: 1/10000. Not yet tested in other applications.</u>
Purification :	<u>The antibody was affinity-purified from rabbit antiserum by affinity-chromatography using epitope-specific immunogen.</u>
Concentration :	<u>1 mg/ml</u>
Storage_stability :	<u>-20°C/1 year</u>
Msds :	<u>MSDS_Antibody.pdf</u>



Other_name : SOD2; Superoxide dismutase [Mn], mitochondrial

Molecular Weight : 24KD

Product Images



Western Blot analysis of NIH-3T3 cells using SOD-2 Polyclonal Antibody.. Secondary antibody was diluted at 1:20000