

Talin-1 Polyclonal Antibody

Catalog_no :	AT5576
Applications :	WB,IHC-p,ELISA
Reactivity :	Human,Mouse,Rat
Category :	抗原抗体
Size :	100µg/50µg/20µg
Gene_name :	TLN1
Protein_name :	Talin-1
Humangene_id :	7094
Humanswissprot_no :	Q9Y490
Mousegene_id :	21894
Mouseswissprot_no :	P26039
Ratgene_id :	
Ratswissprot_no :	
Immunogen :	The antiserum was produced against synthesized peptide derived from the C-terminal region of human TLN1. AA range:2471-2520
Specificity :	Talin-1 Polyclonal Antibody detects endogenous levels of Talin-1 protein.
Formulation :	Liquid in PBS containing 50% glycerol, 0.5% BSA and 0.02% sodium azide.
Source :	Rabbit
Dilution :	Western Blot: 1/500 - 1/2000. IHC-p: 1:100-1:300. ELISA: 1/10000. Not yet tested in other applications.
Purification :	The antibody was affinity-purified from rabbit antiserum by affinity-chromatography using epitope-specific immunogen.
Concentration :	1 mg/ml
Storage_stability :	-20°C/1 year
Msds :	MSDS_Antibody.pdf

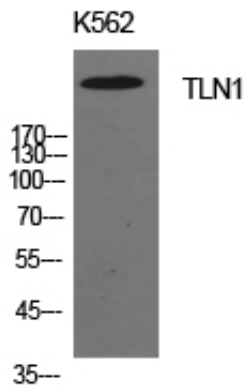


Other_name : TLN1; KIAA1027; TLN; Talin-1

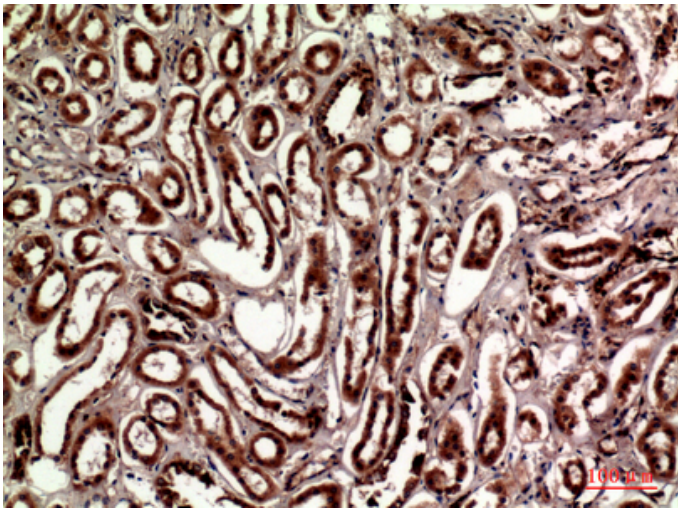
Molecular Weight : 269KD

Weight :

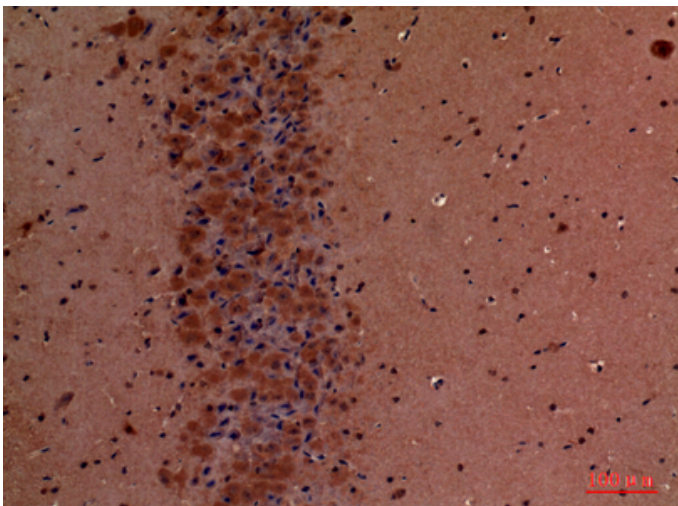
Product Images



Western Blot analysis of K562 cells using Talin-1 Polyclonal Antibody. Antibody was diluted at 1:1000. Secondary antibody was diluted at 1:20000



Immunohistochemical analysis of paraffin-embedded human-kidney, antibody was diluted at 1:100



Immunohistochemical analysis of paraffin-embedded mouse-brain, antibody was diluted at 1:100