

CD6 Polyclonal Antibody

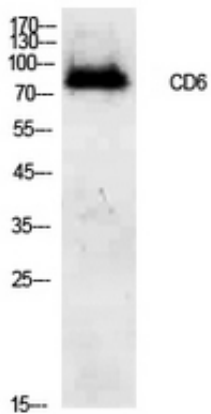
Catalog_no :	AT5577
Applications :	WB,IHC-p,ELISA
Reactivity :	Human
Category :	抗原抗体
Size :	100µg/50µg/20µg
Gene_name :	CD6
Protein_name :	T-cell differentiation antigen CD6
Humangene_id :	923
Humanswissprot_no :	P30203
Mousegene_id :	
Mouseswissprot_no :	Q61003
Ratgene_id :	
Ratswissprot_no :	
Immunogen :	The antiserum was produced against synthesized peptide derived from the Internal region of human CD6. AA range:361-410
Specificity :	CD6 Polyclonal Antibody detects endogenous levels of CD6 protein.
Formulation :	Liquid in PBS containing 50% glycerol, 0.5% BSA and 0.02% sodium azide.
Source :	Rabbit
Dilution :	Western Blot: 1/500 - 1/2000. IHC-p: 1:100-1:300. ELISA: 1/10000. Not yet tested in other applications.
Purification :	The antibody was affinity-purified from rabbit antiserum by affinity-chromatography using epitope-specific immunogen.
Concentration :	1 mg/ml
Storage_stability :	-20°C/1 year
Msds :	MSDS_Antibody.pdf



Other_name : CD6; T-cell differentiation antigen CD6; T12; TP120; CD6

Molecular Weight : 73KD

Product Images



Western Blot analysis of 293 cells using CD6 Polyclonal Antibody.. Secondary antibody was diluted at 1:20000

