

Integrin α L Polyclonal Antibody

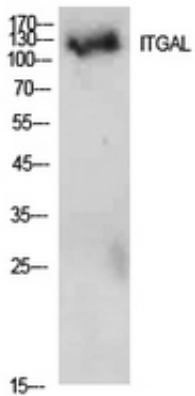
Catalog_no :	<u>AT5578</u>
Applications :	<u>WB,ELISA</u>
Reactivity :	<u>Human</u>
Category :	<u>抗原抗体</u>
Size :	<u>100μg/50μg/20μg</u>
Gene_name :	<u>ITGAL</u>
Protein_name :	<u>Integrin alpha-L</u>
Humangene_id :	<u>3683</u>
Humanswissprot_no :	<u>P20701</u>
Mousegene_id :	<u></u>
Mouseswissprot_no :	<u>P24063</u>
Ratgene_id :	<u></u>
Ratswissprot_no :	<u></u>
Immunogen :	<u>The antiserum was produced against synthesized peptide derived from the Internal region of human ITGAL. AA range:171-220</u>
Specificity :	<u>Integrin αL Polyclonal Antibody detects endogenous levels of Integrin αL protein.</u>
Formulation :	<u>Liquid in PBS containing 50% glycerol, 0.5% BSA and 0.02% sodium azide.</u>
Source :	<u>Rabbit</u>
Dilution :	<u>Western Blot: 1/500 - 1/2000. ELISA: 1/10000. Not yet tested in other applications.</u>
Purification :	<u>The antibody was affinity-purified from rabbit antiserum by affinity-chromatography using epitope-specific immunogen.</u>
Concentration :	<u>1 mg/ml</u>
Storage_stability :	<u>-20°C/1 year</u>
Msds :	<u>MSDS_Antibody.pdf</u>



Other_name : ITGAL; CD11A; Integrin alpha-L; CD11 antigen-like family member A; Leukocyte adhesion glycoprotein LFA-1 alpha chain; LFA-1A; Leukocyte function-associated molecule 1 alpha chain; CD11a

Molecular Weight : 130KD

Product Images



Western Blot analysis of 293 cells using Integrin α L Polyclonal Antibody.. Secondary antibody was diluted at 1:20000