



CD13 Polyclonal Antibody

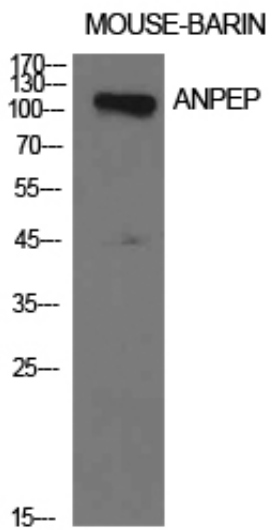
Catalog_no :	<u>AT5579</u>
Applications :	<u>WB,IHC-p,ELISA</u>
Reactivity :	<u>Human</u>
Category :	<u>抗原抗体</u>
Size :	<u>100µg/50µg/20µg</u>
Gene_name :	<u>ANPEP</u>
Protein_name :	<u>Aminopeptidase N</u>
Humangene_id	<u>290</u>
:	<u></u>
Humanswissprot	<u>P15144</u>
_no :	<u></u>
Mousegene_id :	<u></u>
Mouseswissprot	<u>P97449</u>
_no :	<u></u>
Ratgene_id :	<u></u>
Ratswissprot_no	<u></u>
:	<u></u>
Immunogen :	<u>Synthesized peptide derived from Aminopeptidase N at AA range: 881-930</u>
Specificity :	<u>CD13 Polyclonal Antibody detects endogenous levels of CD13 protein.</u>
Formulation :	<u>Liquid in PBS containing 50% glycerol, 0.5% BSA and 0.02% sodium azide.</u>
Source :	<u>Rabbit</u>
Dilution :	<u>Western Blot: 1/500 - 1/2000. IHC-p: 1:100-1:300. ELISA: 1/10000. Not yet tested in other applications.</u>
Purification :	<u>The antibody was affinity-purified from rabbit antiserum by affinity-chromatography using epitope-specific immunogen.</u>
Concentration :	<u>1 mg/ml</u>
Storage_stability	<u>-20°C/1 year</u>
:	<u></u>
Msds :	<u>MSDS_Antibody.pdf</u>



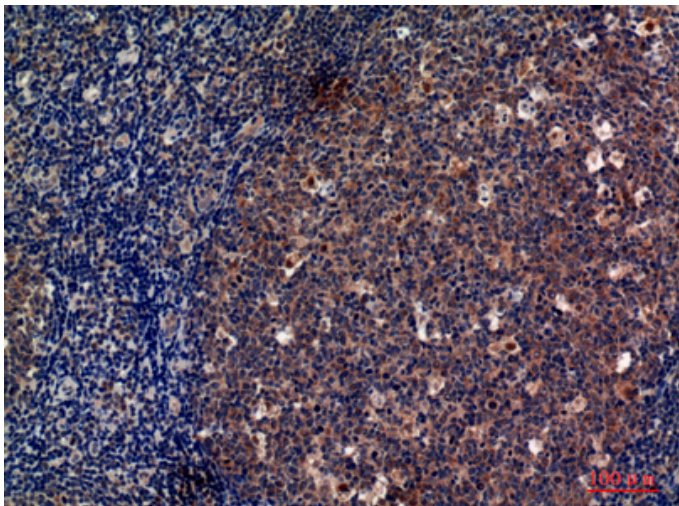
Other_name : ANPEP; APN; CD13; PEPN; Aminopeptidase N; AP-N; hAPN; Alanyl aminopeptidase; Aminopeptidase M; AP-M; Microsomal aminopeptidase; Myeloid plasma membrane glycoprotein CD13; gp150; CD13

Molecular Weight : 110KD

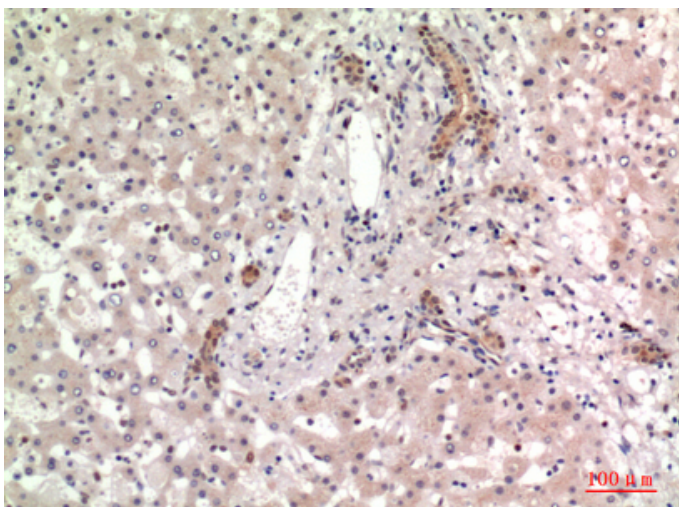
Product Images



Western Blot analysis of mouse brain cells using CD13 Polyclonal Antibody. Antibody was diluted at 1:1000. Secondary antibody was diluted at 1:20000

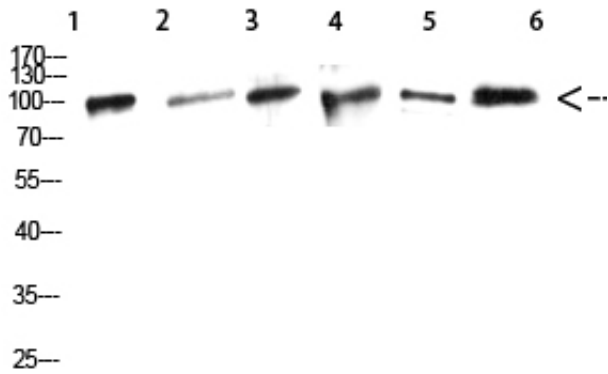


Immunohistochemical analysis of paraffin-embedded human-tonsils, antibody was diluted at 1:100

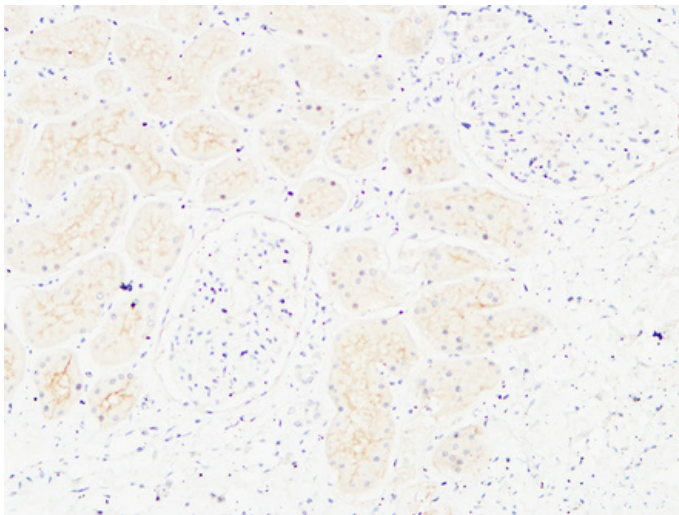


Immunohistochemical analysis of paraffin-embedded human-liver, antibody was diluted at 1:100

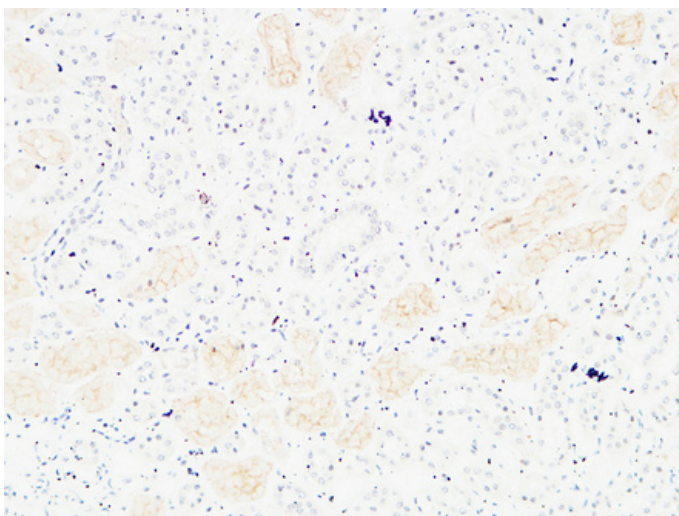
Western Blot analysis of mouse-liver mouse-heart mouse-kidney mouse-spleen mouse-brain mouse-heart using CD13 Polyclonal Antibody diluted at 1:1000. Secondary antibody was diluted at 1:20000



1, mouse-liver 2, mouse-heart
 3, mouse-kidney 4, mouse-spleen
 5, mouse-brain 6, mouse-heart

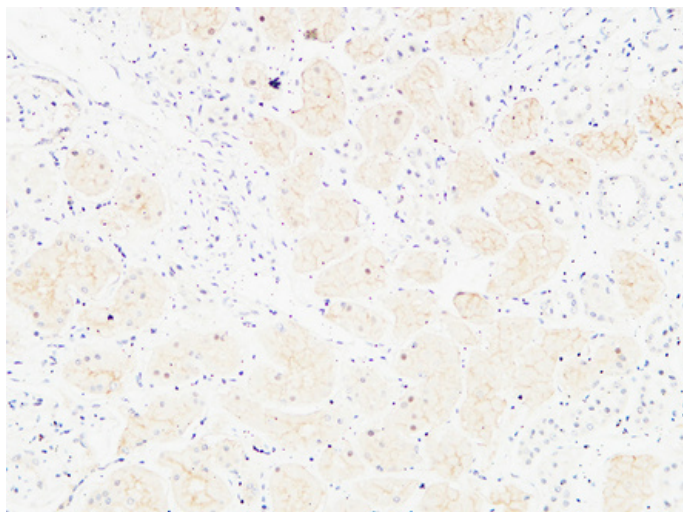


Immunohistochemical analysis of paraffin-embedded Human kidney. 1, Antibody was diluted at 1:200(4°, overnight). 2, High-pressure and temperature EDTA, pH8.0 was used for antigen retrieval. 3, Secondary antibody was diluted at 1:200(room temperature, 30min).



Immunohistochemical analysis of paraffin-embedded Human kidney. 1, Antibody was diluted at 1:200(4°, overnight). 2, High-pressure and temperature EDTA, pH8.0 was used for antigen retrieval. 3, Secondary antibody was diluted at 1:200(room temperature, 30min).

Immunohistochemical analysis of paraffin-embedded Human kidney. 1, Antibody was diluted at 1:200(4°, overnight). 2, High-pressure and temperature



EDTA, pH8.0 was used for antigen retrieval. 3,Secondary antibody was diluted at 1:200(room temperature, 30min).