

CD19 Polyclonal Antibody

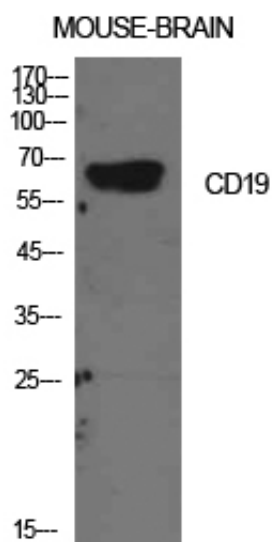
Catalog_no :	AT5580
Applications :	WB,IHC-p,ELISA
Reactivity :	Human
Category :	抗原抗体
Size :	100µg/50µg/20µg
Gene_name :	CD19
Protein_name :	B-lymphocyte antigen CD19
Humangene_id :	930
Humanswissprot_no :	P15391
Mousegene_id :	
Mouseswissprot_no :	P25918
Ratgene_id :	
Ratswissprot_no :	
Immunogen :	Synthesized peptide derived from B-lymphocyte antigen CD19 at AA range: 191-240
Specificity :	CD19 Polyclonal Antibody detects endogenous levels of CD19 protein.
Formulation :	Liquid in PBS containing 50% glycerol, 0.5% BSA and 0.02% sodium azide.
Source :	Rabbit
Dilution :	Western Blot: 1/500 - 1/2000. IHC-p: 1:100-1:300. ELISA: 1/10000. Not yet tested in other applications.
Purification :	The antibody was affinity-purified from rabbit antiserum by affinity-chromatography using epitope-specific immunogen.
Concentration :	1 mg/ml
Storage_stability :	-20°C/1 year
Msds :	MSDS_Antibody.pdf



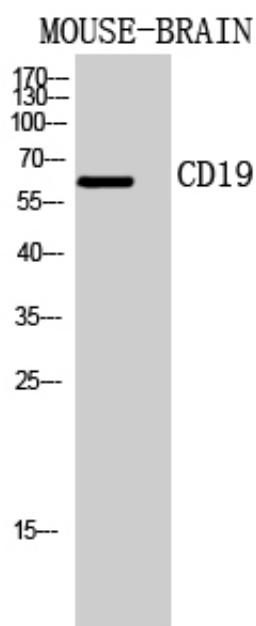
Other_name : CD19; B-lymphocyte antigen CD19; B-lymphocyte surface antigen B4; Differentiation antigen CD19; T-cell surface antigen Leu-12; CD19

Molecular Weight : 61KD

Product Images

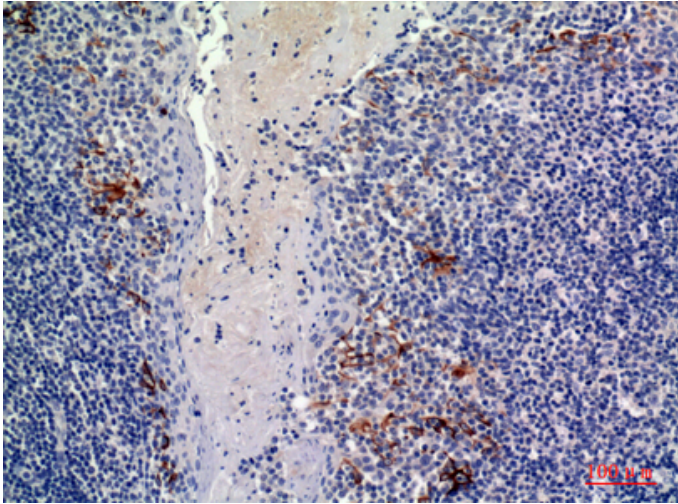


Western Blot analysis of mouse brain cells using CD19 Polyclonal Antibody. Antibody was diluted at 1:2000. Secondary antibody was diluted at 1:20000

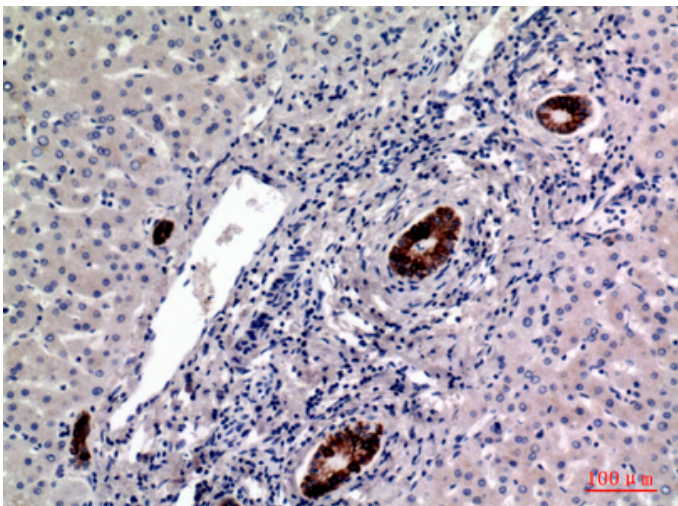
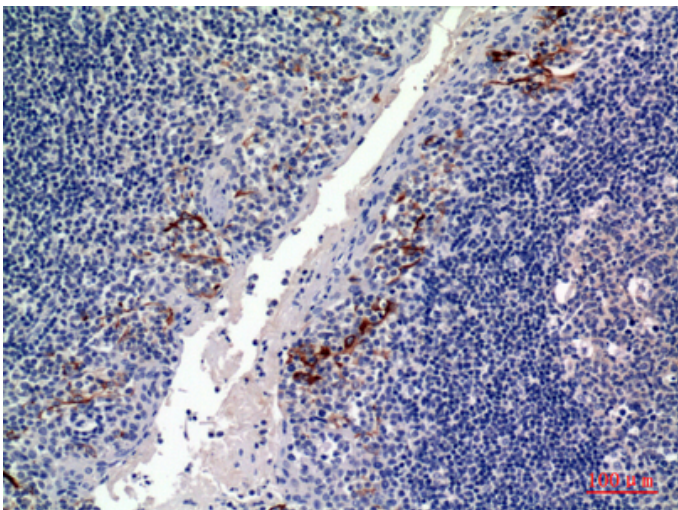


Western Blot analysis of MOUSE-BRAIN cells using CD19 Polyclonal Antibody diluted at 1 : 2000. Secondary antibody was diluted at 1:20000

Immunohistochemical analysis of paraffin-embedded human-tonsils, antibody was diluted at 1:100

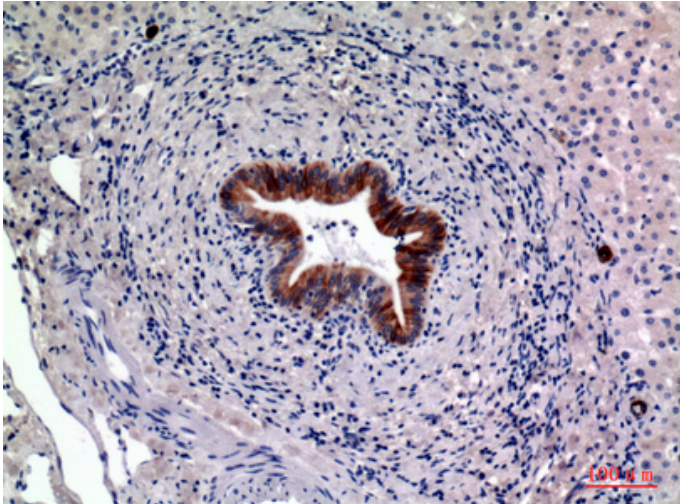


Immunohistochemical analysis of paraffin-embedded human-tonsils, antibody was diluted at 1:100

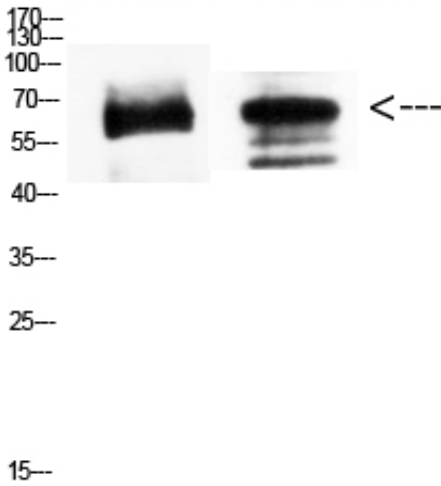


Immunohistochemical analysis of paraffin-embedded human-liver, antibody was diluted at 1:100

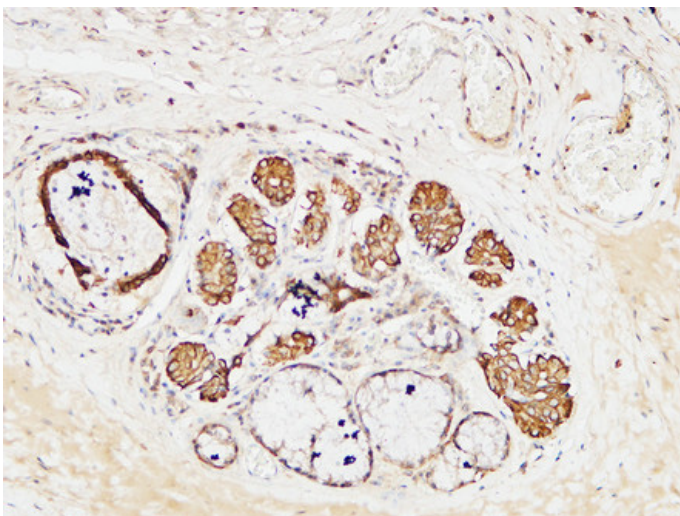
Immunohistochemical analysis of paraffin-embedded human-liver, antibody was diluted at 1:100



mouse-kidney mouse-spleen

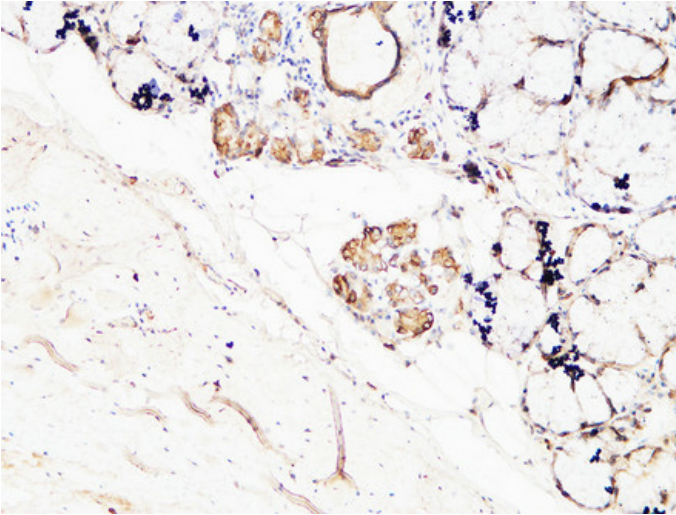


Western Blot analysis of mouse-kidney mouse-spleen using CD19 Polyclonal Antibody diluted at 1:1500. Secondary antibody was diluted at 1:20000

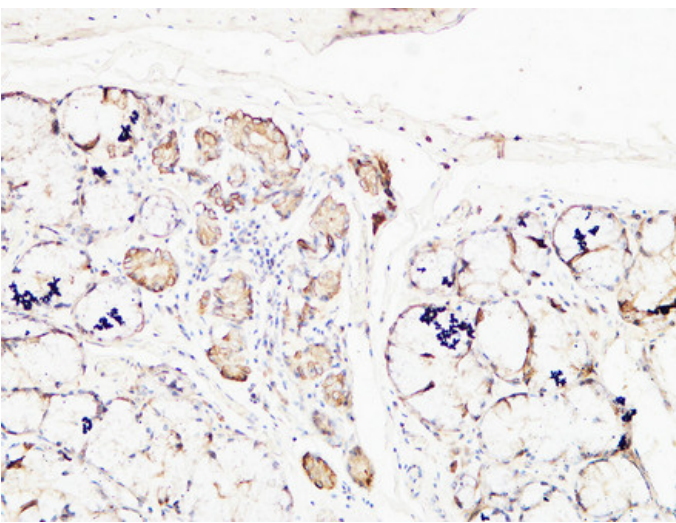


Immunohistochemical analysis of paraffin-embedded Human Amygdala. 1, Antibody was diluted at 1:200(4°,overnight). 2, High-pressure and temperature EDTA, pH8.0 was used for antigen retrieval. 3,Secondary antibody was diluted at 1:200(room temperature, 30min).

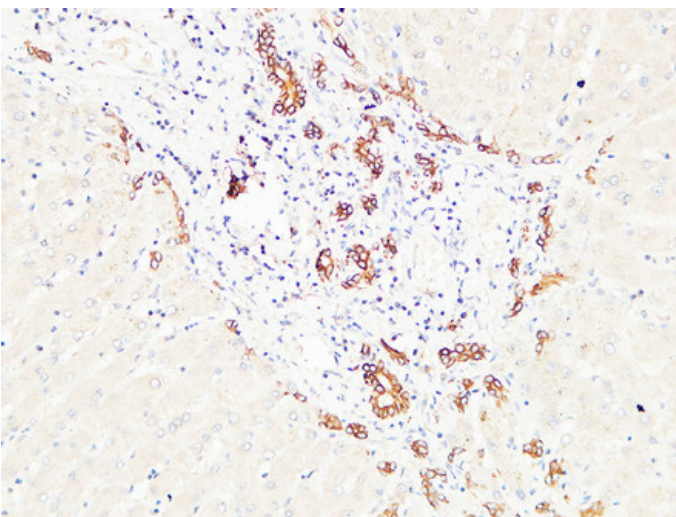
Immunohistochemical analysis of paraffin-embedded Human Amygdala. 1, Antibody was diluted at 1:200(4°,overnight). 2, High-pressure and temperature



EDTA, pH8.0 was used for antigen retrieval. 3,Secondary antibody was diluted at 1:200(room temperature, 30min).

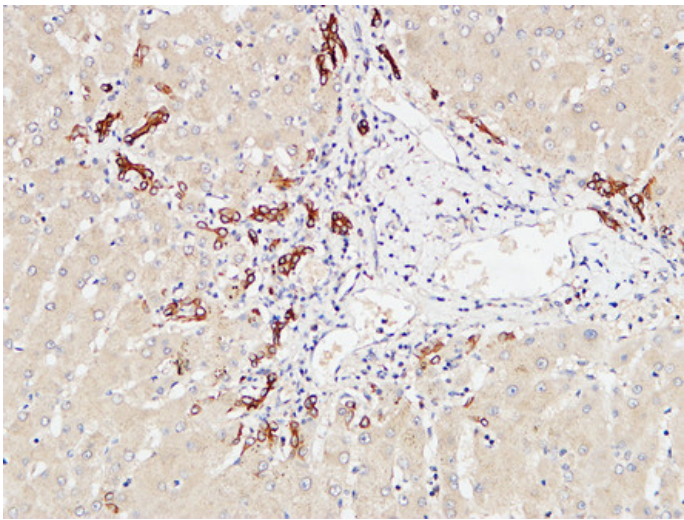
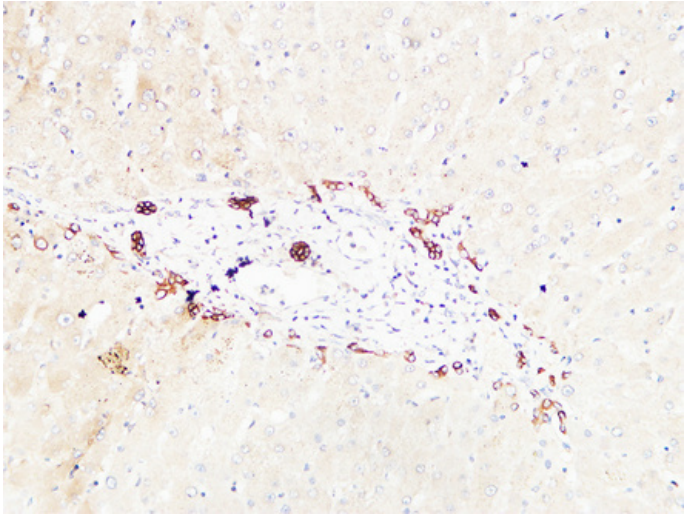


Immunohistochemical analysis of paraffin-embedded Human Amygdala. 1, Antibody was diluted at 1:200(4°,overnight). 2, High-pressure and temperature EDTA, pH8.0 was used for antigen retrieval. 3,Secondary antibody was diluted at 1:200(room temperature, 30min).



Immunohistochemical analysis of paraffin-embedded Human liver. 1, Antibody was diluted at 1:100(4°,overnight). 2, High-pressure and temperature EDTA, pH8.0 was used for antigen retrieval. 3,Secondary antibody was diluted at 1:200(room temperature, 30min).

Immunohistochemical analysis of paraffin-embedded Human liver. 1, Antibody was diluted at 1:100(4°,overnight). 2, High-pressure and temperature EDTA, pH8.0 was used for antigen retrieval. 3,Secondary antibody was diluted at 1:200(room temperature, 30min).



Immunohistochemical analysis of paraffin-embedded Human liver. 1, Antibody was diluted at 1:100(4°,overnight). 2, High-pressure and temperature EDTA, pH8.0 was used for antigen retrieval. 3,Secondary antibody was diluted at 1:200(room temperature, 30min).