

## CD33 Polyclonal Antibody

Catalog_no :	AT5584
Applications :	WB,ELISA
Reactivity :	Human
Category :	抗原抗体
Size :	100µg/50µg/20µg
Gene_name :	CD33
Protein_name :	Myeloid cell surface antigen CD33
Humangene_id :	<a href="#">945</a>
Humanswissprot_no :	<a href="#">P20138</a>
Mousegene_id :	
Mouseswissprot_no :	<a href="#">Q63994</a>
Ratgene_id :	
Ratswissprot_no :	
Immunogen :	The antiserum was produced against synthesized peptide derived from the Internal region of human CD33. AA range:71-120
Specificity :	CD33 Polyclonal Antibody detects endogenous levels of CD33 protein.
Formulation :	Liquid in PBS containing 50% glycerol, 0.5% BSA and 0.02% sodium azide.
Source :	Rabbit
Dilution :	Western Blot: 1/500 - 1/2000. ELISA: 1/10000. Not yet tested in other applications.
Purification :	The antibody was affinity-purified from rabbit antiserum by affinity-chromatography using epitope-specific immunogen.
Concentration :	1 mg/ml
Storage_stability :	-20°C/1 year
Msds :	<a href="#">MSDS_Antibody.pdf</a>



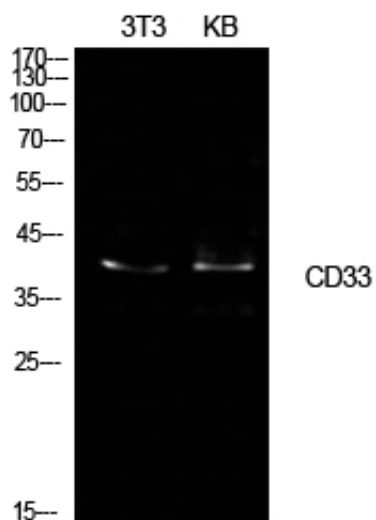
Other\_name : CD33; SIGLEC3; Myeloid cell surface antigen CD33; Sialic acid-binding Ig-like lectin 3; Siglec-3; gp67; CD33

---

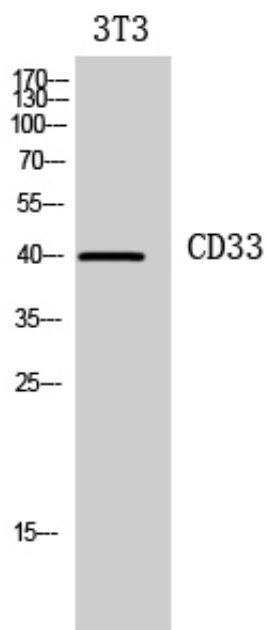
Molecular Weight : 40KD

---

## Product Images



Western Blot analysis of NIH-3T3, KB cells using CD33 Polyclonal Antibody.. Secondary antibody was diluted at 1:20000



Western Blot analysis of 3T3 cells using CD33 Polyclonal Antibody. Secondary antibody was diluted at 1:20000