

## CD36 Polyclonal Antibody

Catalog_no :	<u>AT5585</u>
Applications :	<u>WB,ELISA</u>
Reactivity :	<u>Human,Mouse,Rat</u>
Category :	<u>抗原抗体</u>
Size :	<u>100µg/50µg/20µg</u>
Gene_name :	<u>CD36</u>
Protein_name :	<u>Platelet glycoprotein 4</u>
Humangene_id	<u><a href="#">948</a></u>
:	<u></u>
Humanswissprot	<u><a href="#">P16671</a></u>
_no :	<u></u>
Mousegene_id :	<u><a href="#">12491</a></u>
Mouseswissprot	<u><a href="#">Q08857</a></u>
_no :	<u></u>
Ratgene_id :	<u></u>
Ratswissprot_no	<u><a href="#">Q07969</a></u>
:	<u></u>
Immunogen :	<u>The antiserum was produced against synthesized peptide derived from the Internal region of human CD36. AA range:331-380</u>
Specificity :	<u>CD36 Polyclonal Antibody detects endogenous levels of CD36 protein.</u>
Formulation :	<u>Liquid in PBS containing 50% glycerol, 0.5% BSA and 0.02% sodium azide.</u>
Source :	<u>Rabbit</u>
Dilution :	<u>Western Blot: 1/500 - 1/2000. ELISA: 1/10000. Not yet tested in other applications.</u>
Purification :	<u>The antibody was affinity-purified from rabbit antiserum by affinity-chromatography using epitope-specific immunogen.</u>
Concentration :	<u>1 mg/ml</u>
Storage_stability	<u>-20°C/1 year</u>
:	<u></u>
Msds :	<u>MSDS_Antibody.pdf</u>



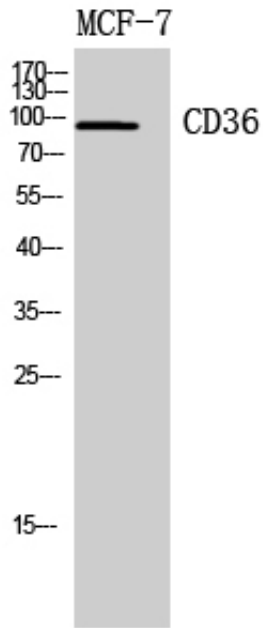
Other\_name : CD36; GP3B; GP4; Platelet glycoprotein 4; Fatty acid translocase; FAT; Glycoprotein IIIb; GPIIIB; Leukocyte differentiation antigen CD36; PAS IV; PAS-4; Platelet collagen receptor; Platelet glycoprotein IV; GPIV; Thrombospondin receptor; CD36

---

Molecular Weight : 90KD

---

## Product Images



Western Blot analysis of MCF7, 4T1 cells using CD36 Polyclonal Antibody.. Secondary antibody was diluted at 1:20000