

CD42d Polyclonal Antibody

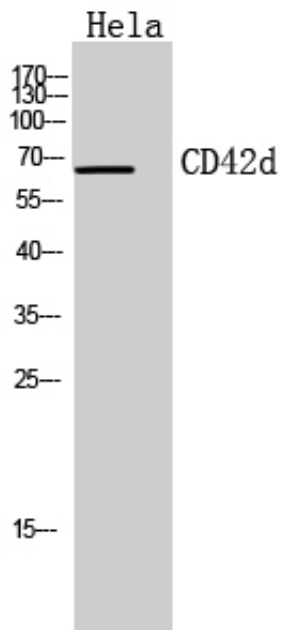
Catalog_no :	<u>AT5587</u>
Applications :	<u>WB,IHC-p,ELISA</u>
Reactivity :	<u>Human,Mouse,Rat</u>
Category :	<u>抗原抗体</u>
Size :	<u>100µg/50µg/20µg</u>
Gene_name :	<u>GP5</u>
Protein_name :	<u>Platelet glycoprotein V</u>
Humangene_id :	<u>2814</u>
Humanswissprot_no :	<u>P40197</u>
Mousegene_id :	<u></u>
Mouseswissprot_no :	<u>O08742</u>
Ratgene_id :	<u>25259</u>
Ratswissprot_no :	<u>O08770</u>
Immunogen :	<u>The antiserum was produced against synthesized peptide derived from the Internal region of human GP5. AA range:331-380</u>
Specificity :	<u>CD42d Polyclonal Antibody detects endogenous levels of CD42d protein.</u>
Formulation :	<u>Liquid in PBS containing 50% glycerol, 0.5% BSA and 0.02% sodium azide.</u>
Source :	<u>Rabbit</u>
Dilution :	<u>Western Blot: 1/500 - 1/2000. IHC-p: 1:100-1:300. ELISA: 1/10000. Not yet tested in other applications.</u>
Purification :	<u>The antibody was affinity-purified from rabbit antiserum by affinity-chromatography using epitope-specific immunogen.</u>
Concentration :	<u>1 mg/ml</u>
Storage_stability :	<u>-20°C/1 year</u>
Msds :	<u>MSDS_Antibody.pdf</u>



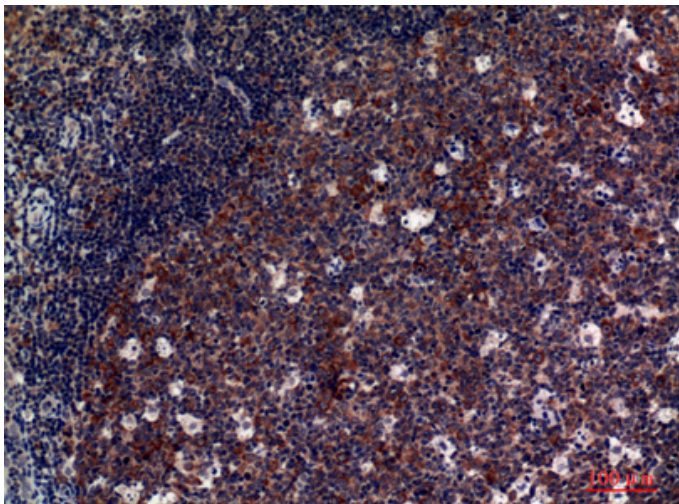
Other_name : GP5; Platelet glycoprotein V; GPV; Glycoprotein 5; CD42d

Molecular Weight : 62KD

Product Images



Western Blot analysis of HeLa cells using CD42d Polyclonal Antibody.. Secondary antibody was diluted at 1:20000



Immunohistochemical analysis of paraffin-embedded human-tonsils, antibody was diluted at 1:100