



Integrin α2 Polyclonal Antibody

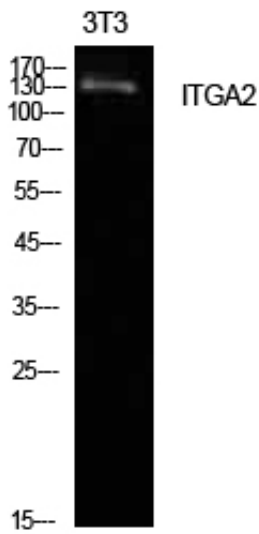
Catalog_no :	AT5588
Applications :	WB,IHC-p,ELISA
Reactivity :	Human,Mouse,Rat
Category :	抗原抗体
Size :	100µg/50µg/20µg
Gene_name :	ITGA2
Protein_name :	Integrin alpha-2
Humangene_id :	3673
Humanswissprot_no :	P17301
Mousegene_id :	16398
Mouseswissprot_no :	Q62469
Ratgene_id :	
Ratswissprot_no :	
Immunogen :	The antiserum was produced against synthesized peptide derived from the C-terminal region of human ITGA2. AA range:1081-1130
Specificity :	Integrin α2 Polyclonal Antibody detects endogenous levels of Integrin α2 protein.
Formulation :	Liquid in PBS containing 50% glycerol, 0.5% BSA and 0.02% sodium azide.
Source :	Rabbit
Dilution :	Western Blot: 1/500 - 1/2000. IHC-p: 1:100-1:300. ELISA: 1/10000. Not yet tested in other applications.
Purification :	The antibody was affinity-purified from rabbit antiserum by affinity-chromatography using epitope-specific immunogen.
Concentration :	1 mg/ml
Storage_stability :	-20°C/1 year
Msds :	MSDS_Antibody.pdf



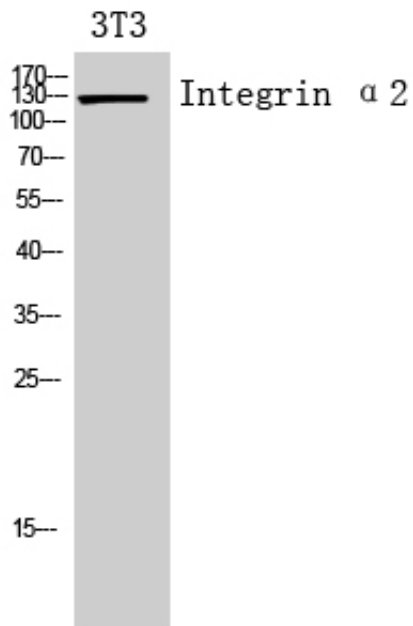
Other_name : ITGA2; CD49B; Integrin alpha-2; CD49 antigen-like family member B; Collagen receptor; Platelet membrane glycoprotein Ia; GPIa; VLA-2 subunit alpha; CD49b

Molecular Weight : 130KD

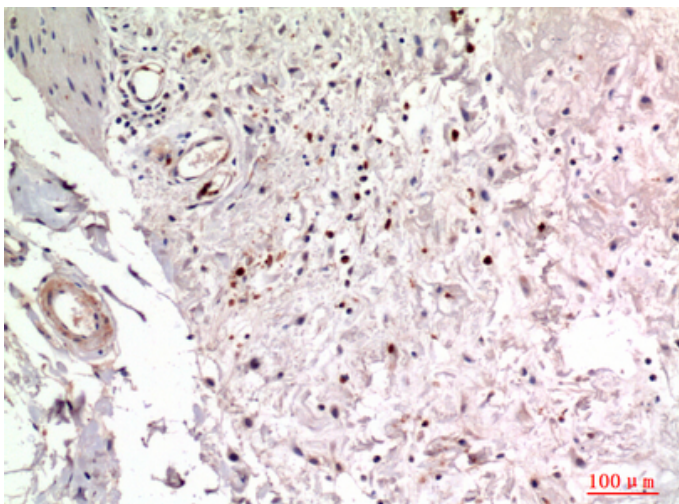
Product Images



Western Blot analysis of NIH-3T3 cells using Integrin $\alpha 2$ Polyclonal Antibody.. Secondary antibody was diluted at 1:20000



Western Blot analysis of 3T3 cells using Integrin $\alpha 2$ Polyclonal Antibody. Secondary antibody was diluted at 1:20000



Immunohistochemical analysis of paraffin-embedded human colon, antibody was diluted at 1:100



专注二抗产品

Biodragon旗下品牌
