

Integrin α 5 Polyclonal Antibody

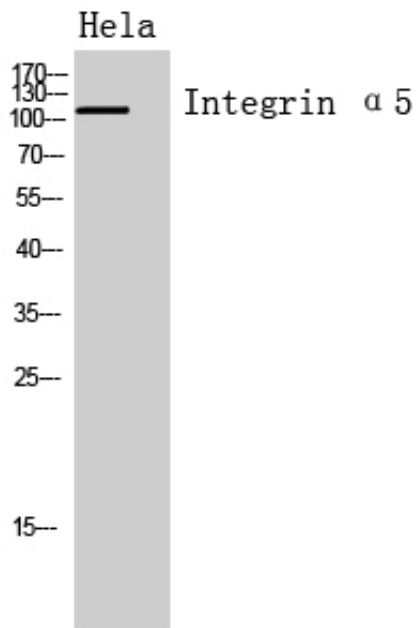
Catalog_no :	AT5589
Applications :	WB,IHC-p,ELISA
Reactivity :	Human,Mouse,Rat
Category :	抗原抗体
Size :	100 μ g/50 μ g/20 μ g
Gene_name :	ITGA5
Protein_name :	Integrin alpha-5
Humangene_id :	3678
Humanswissprot_no :	P08648
Mousegene_id :	16402
Mouseswissprot_no :	P11688
Ratgene_id :	
Ratswissprot_no :	
Immunogen :	The antiserum was produced against synthesized peptide derived from the Internal region of human ITGA5. AA range:561-610
Specificity :	Integrin α 5 Polyclonal Antibody detects endogenous levels of Integrin α 5 protein.
Formulation :	Liquid in PBS containing 50% glycerol, 0.5% BSA and 0.02% sodium azide.
Source :	Rabbit
Dilution :	Western Blot: 1/500 - 1/2000. IHC-p: 1:100-1:300. ELISA: 1/10000. Not yet tested in other applications.
Purification :	The antibody was affinity-purified from rabbit antiserum by affinity-chromatography using epitope-specific immunogen.
Concentration :	1 mg/ml
Storage_stability :	-20°C/1 year
Msds :	MSDS_Antibody.pdf



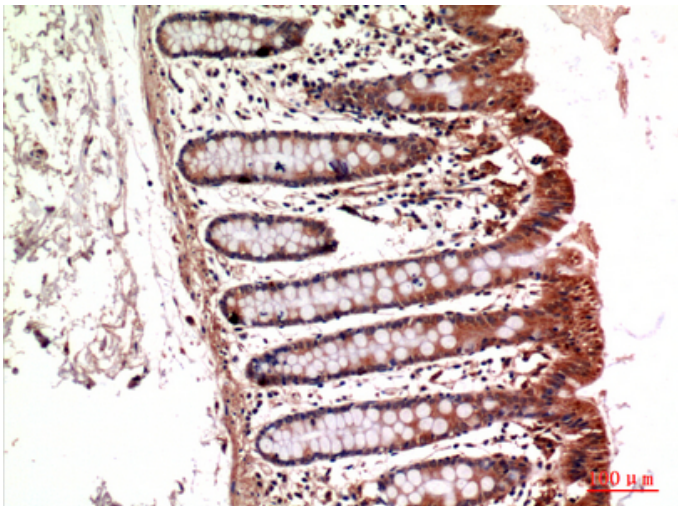
Other_name : ITGA5; FNRA; Integrin alpha-5; CD49 antigen-like family member E; Fibronectin receptor subunit alpha; Integrin alpha-F; VLA-5; CD49e

Molecular Weight : 115KD

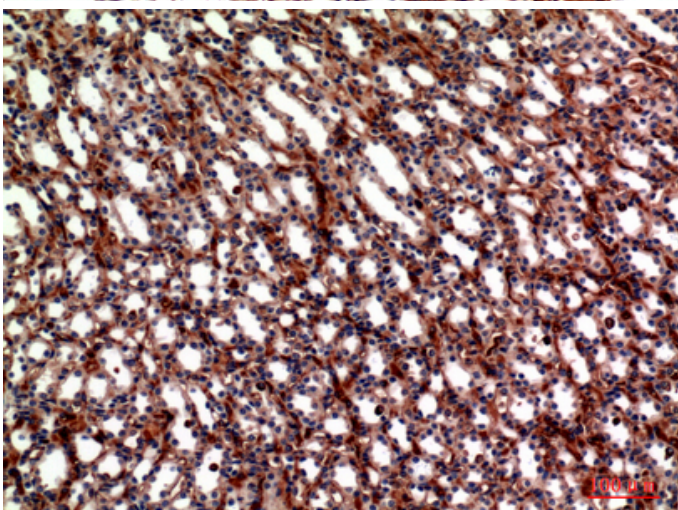
Product Images



Western Blot analysis of HeLa cells using Integrin $\alpha 5$ Polyclonal Antibody.. Secondary antibody was diluted at 1:20000



Immunohistochemical analysis of paraffin-embedded mouse-kidney, antibody was diluted at 1:100



Immunohistochemical analysis of paraffin-embedded mouse-kidney, antibody was diluted at 1:100