



## Integrin α6 Polyclonal Antibody

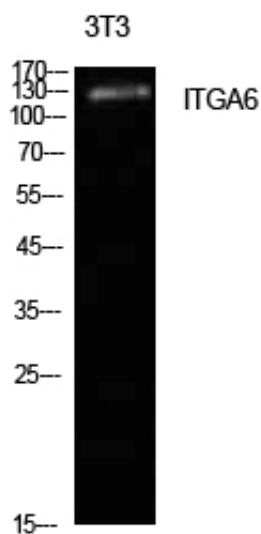
|                     |  |
|---------------------|--|
| Catalog_no :        | AT5590   |
| Applications :      | WB,ELISA   |
| Reactivity :        | Human,Mouse,Rat  |
| Category :          | 抗原抗体   |
| Size :              | 100µg/50µg/20µg  |
| Gene_name :         | ITGA6  |
| Protein_name :      | Integrin alpha-6   |
| Humangene_id :      | <a href="#">3655</a>   |
| Humanswissprot_no : | <a href="#">P23229</a>   |
| Mousegene_id :      |  |
| Mouseswissprot_no : | <a href="#">Q61739</a>   |
| Ratgene_id :        |  |
| Ratswissprot_no :   |  |
| Immunogen :         | The antiserum was produced against synthesized peptide derived from the Internal region of human ITGA6. AA range:901-950 |
| Specificity :       | Integrin α6 Polyclonal Antibody detects endogenous levels of Integrin α6 protein.  |
| Formulation :       | Liquid in PBS containing 50% glycerol, 0.5% BSA and 0.02% sodium azide.  |
| Source :            | Rabbit   |
| Dilution :          | Western Blot: 1/500 - 1/2000. ELISA: 1/10000. Not yet tested in other applications.                                      |
| Purification :      | The antibody was affinity-purified from rabbit antiserum by affinity-chromatography using epitope-specific immunogen.    |
| Concentration :     | 1 mg/ml  |
| Storage_stability : | -20°C/1 year   |
| Msds :              | <a href="#">MSDS_Antibody.pdf</a>  |



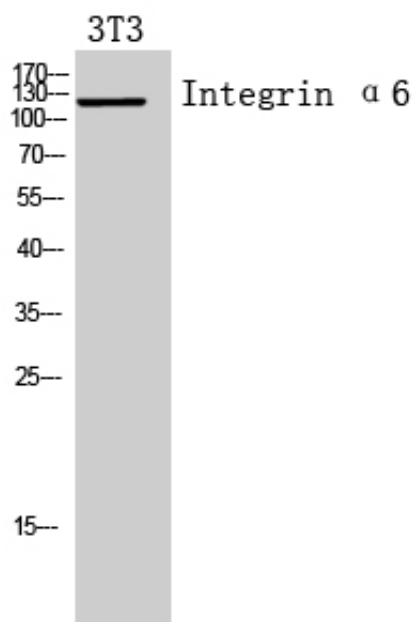
Other\_name : ITGA6; Integrin alpha-6; CD49 antigen-like family member F; VLA-6; CD49f

Molecular Weight : 125KD

## Product Images



Western Blot analysis of NIH-3T3 cells using Integrin  $\alpha 6$  Polyclonal Antibody.. Secondary antibody was diluted at 1:20000



Western Blot analysis of 3T3 cells using Integrin  $\alpha 6$  Polyclonal Antibody. Secondary antibody was diluted at 1:20000