

CD53 Polyclonal Antibody

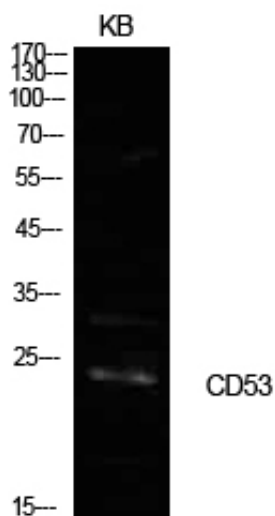
Catalog_no :	<u>AT5591</u>
Applications :	<u>WB,ELISA</u>
Reactivity :	<u>Human,Mouse,Rat</u>
Category :	<u>抗原抗体</u>
Size :	<u>100µg/50µg/20µg</u>
Gene_name :	<u>CD53</u>
Protein_name :	<u>Leukocyte surface antigen CD53</u>
Humangene_id	<u>963</u>
:	<u></u>
Humanswissprot	<u>P19397</u>
_no :	<u></u>
Mousegene_id :	<u>12508</u>
Mouseswissprot	<u>Q61451</u>
_no :	<u></u>
Ratgene_id :	<u>24251</u>
Ratswissprot_no	<u>P24485</u>
:	<u></u>
Immunogen :	<u>The antiserum was produced against synthesized peptide derived from the Internal region of human CD53. AA range:91-140</u>
Specificity :	<u>CD53 Polyclonal Antibody detects endogenous levels of CD53 protein.</u>
Formulation :	<u>Liquid in PBS containing 50% glycerol, 0.5% BSA and 0.02% sodium azide.</u>
Source :	<u>Rabbit</u>
Dilution :	<u>Western Blot: 1/500 - 1/2000. ELISA: 1/10000. Not yet tested in other applications.</u>
Purification :	<u>The antibody was affinity-purified from rabbit antiserum by affinity-chromatography using epitope-specific immunogen.</u>
Concentration :	<u>1 mg/ml</u>
Storage_stability	<u>-20°C/1 year</u>
:	<u></u>
Msds :	<u>MSDS_Antibody.pdf</u>



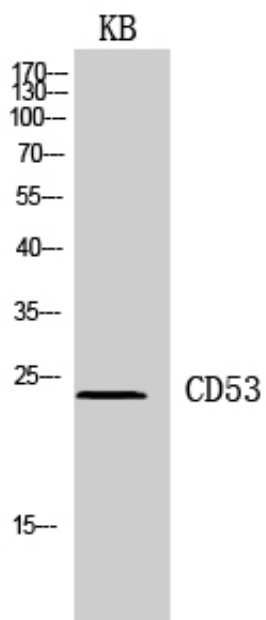
Other_name : CD53; MOX44; TSPAN25; Leukocyte surface antigen CD53; Cell surface glycoprotein CD53; Tetraspanin-25; Tspan-25; CD53

Molecular Weight : 24KD

Product Images



Western Blot analysis of KB cells using CD53 Polyclonal Antibody.. Secondary antibody was diluted at 1:20000



Western Blot analysis of KB cells using CD53 Polyclonal Antibody. Secondary antibody was diluted at 1:20000