

P-Selectin Polyclonal Antibody

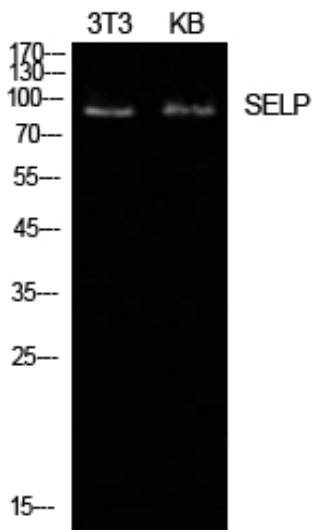
Catalog_no :	<u>AT5593</u>
Applications :	<u>WB,IHC-p,ELISA</u>
Reactivity :	<u>Human,Mouse,Rat</u>
Category :	<u>抗原抗体</u>
Size :	<u>100µg/50µg/20µg</u>
Gene_name :	<u>SELP</u>
Protein_name :	<u>P-selectin</u>
Humangene_id :	<u>6403</u>
Humanswissprot_no :	<u>P16109</u>
Mousegene_id :	<u>20344</u>
Mouseswissprot_no :	<u>Q01102</u>
Ratgene_id :	<u>25651</u>
Ratswissprot_no :	<u>P98106</u>
Immunogen :	<u>The antiserum was produced against synthesized peptide derived from the N-terminal region of human SELP. AA range:81-130</u>
Specificity :	<u>P-Selectin Polyclonal Antibody detects endogenous levels of P-Selectin protein.</u>
Formulation :	<u>Liquid in PBS containing 50% glycerol, 0.5% BSA and 0.02% sodium azide.</u>
Source :	<u>Rabbit</u>
Dilution :	<u>Western Blot: 1/500 - 1/2000. IHC-p: 1:100-1:300. ELISA: 1/10000. Not yet tested in other applications.</u>
Purification :	<u>The antibody was affinity-purified from rabbit antiserum by affinity-chromatography using epitope-specific immunogen.</u>
Concentration :	<u>1 mg/ml</u>
Storage_stability :	<u>-20°C/1 year</u>
Msds :	<u>MSDS_Antibody.pdf</u>



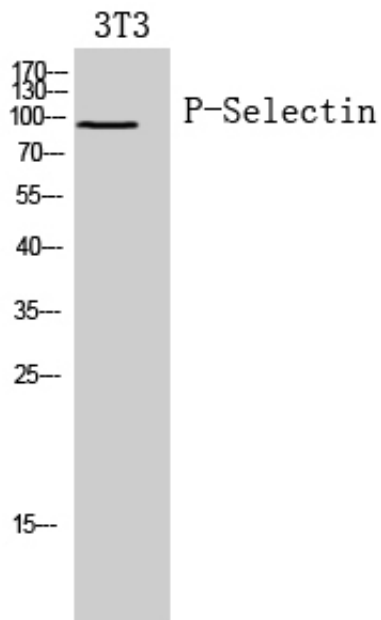
Other_name : SELP; GMRP; GRMP; P-selectin; CD62 antigen-like family member P; Granule membrane protein 140; GMP-140; Leukocyte-endothelial cell adhesion molecule 3; LECAM3; Platelet activation dependent granule-external membrane protein; PADGEM; CD62P

Molecular Weight : 91KD

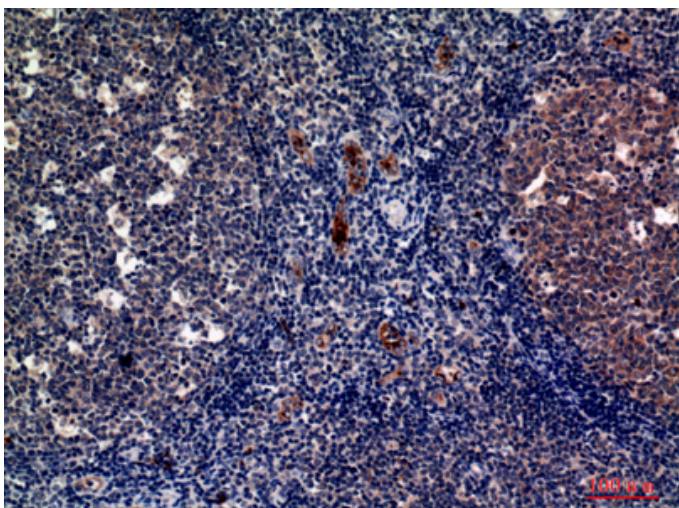
Product Images



Western Blot analysis of NIH-3T3, KB cells using P-Selectin Polyclonal Antibody.. Secondary antibody was diluted at 1:20000

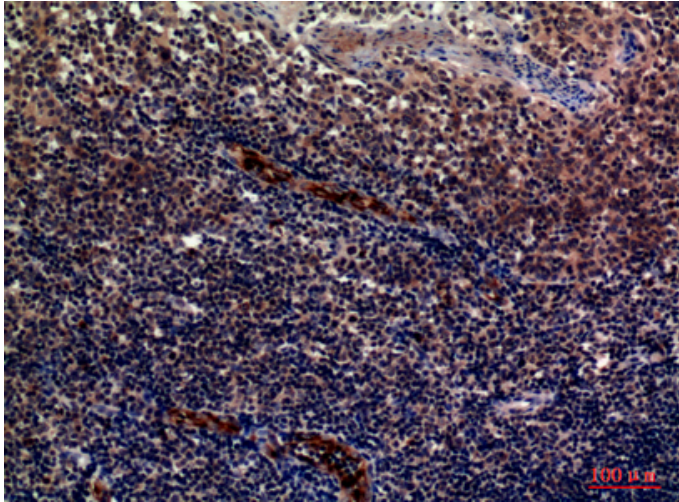


Western Blot analysis of 3T3 cells using P-Selectin Polyclonal Antibody. Secondary antibody was diluted at 1:20000



Immunohistochemical analysis of paraffin-embedded human-tonsils, antibody was diluted at 1:100

Immunohistochemical analysis of paraffin-embedded



human-tonsils, antibody was diluted at 1:100