

CD85d Polyclonal Antibody

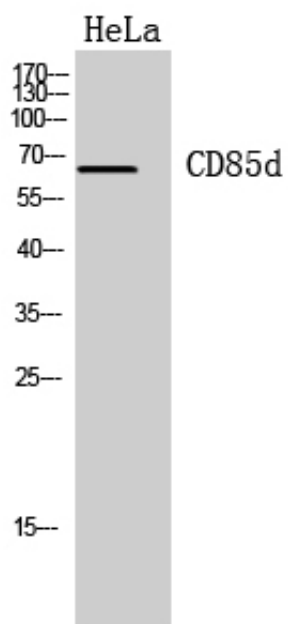
Catalog_no :	AT5595
Applications :	WB,ELISA
Reactivity :	Human
Category :	抗原抗体
Size :	100µg/50µg/20µg
Gene_name :	LILRB2
Protein_name :	Leukocyte immunoglobulin-like receptor subfamily B member 2
Humangene_id :	10288
Humanswissprot_no :	Q8N423
Ratgene_id :	
Ratswissprot_no :	
Immunogen :	The antiserum was produced against synthesized peptide derived from the Internal region of human LILRB2. AA range:121-170
Specificity :	CD85d Polyclonal Antibody detects endogenous levels of CD85d protein.
Formulation :	Liquid in PBS containing 50% glycerol, 0.5% BSA and 0.02% sodium azide.
Source :	Rabbit
Dilution :	Western Blot: 1/500 - 1/2000. ELISA: 1/10000. Not yet tested in other applications.
Purification :	The antibody was affinity-purified from rabbit antiserum by affinity-chromatography using epitope-specific immunogen.
Concentration :	1 mg/ml
Storage_stability :	-20°C/1 year
Msds :	MSDS_Antibody.pdf
Other_name :	LILRB2; ILT4; LIR2; MIR10; Leukocyte immunoglobulin-like receptor subfamily B member 2; LIR-2; Leukocyte immunoglobulin-like receptor 2; CD85 antigen-like family member D; Immunoglobulin-like transcript 4; ILT-4; Monocyte/macrophage immunoglobulin-like receptor 10; MIR-10; CD85d



Molecular
Weight :

66KD

Product Images



Western Blot analysis of Hela cells using CD85d Polyclonal Antibody.. Secondary antibody was diluted at 1:20000