

LIR-1 Polyclonal Antibody

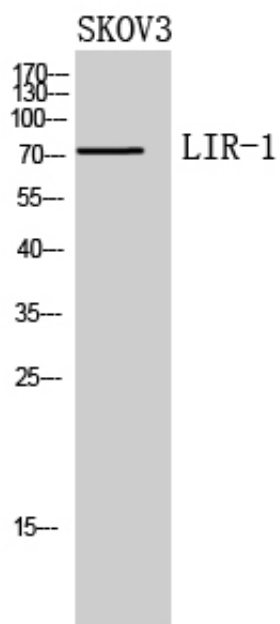
Catalog_no :	AT5596
Applications :	WB,ELISA
Reactivity :	Human
Category :	抗原抗体
Size :	100µg/50µg/20µg
Gene_name :	LILRB1
Protein_name :	Leukocyte immunoglobulin-like receptor subfamily B member 1
Humangene_id :	10859
Humanswissprot_no :	Q8NHL6
Ratgene_id :	
Ratswissprot_no :	
Immunogen :	The antiserum was produced against synthesized peptide derived from the N-terminal region of human LILRB1. AA range:21-70
Specificity :	LIR-1 Polyclonal Antibody detects endogenous levels of LIR-1 protein.
Formulation :	Liquid in PBS containing 50% glycerol, 0.5% BSA and 0.02% sodium azide.
Source :	Rabbit
Dilution :	Western Blot: 1/500 - 1/2000. ELISA: 1/10000. Not yet tested in other applications.
Purification :	The antibody was affinity-purified from rabbit antiserum by affinity-chromatography using epitope-specific immunogen.
Concentration :	1 mg/ml
Storage_stability :	-20°C/1 year
Msds :	MSDS_Antibody.pdf
Other_name :	LILRB1; ILT2; LIR1; MIR7; Leukocyte immunoglobulin-like receptor subfamily B member 1; LIR-1; Leukocyte immunoglobulin-like receptor 1; CD85 antigen-like family member J; Immunoglobulin-like transcript 2; ILT-2; Monocyte/macrophage immunoglobulin-like receptor 7; MIR-7; CD85j



Molecular
Weight :

72KD

Product Images



Western Blot analysis of SKOV3 cells using LIR-1 Polyclonal Antibody.. Secondary antibody was diluted at 1:20000