

CD93 Polyclonal Antibody

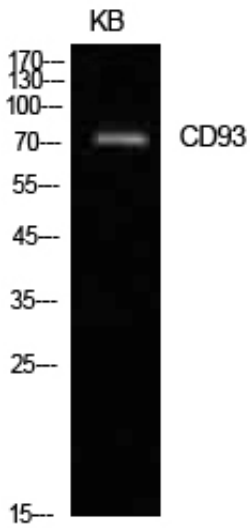
Catalog_no :	AT5597
Applications :	WB,ELISA
Reactivity :	Human
Category :	抗原抗体
Size :	100µg/50µg/20µg
Gene_name :	CD93
Protein_name :	Complement component C1q receptor
Humangene_id :	22918
Humanswissprot_no :	Q9NPY3
Mousegene_id :	
Mouseswissprot_no :	O89103
Ratgene_id :	
Ratswissprot_no :	
Immunogen :	The antiserum was produced against synthesized peptide derived from the Internal region of human CD93. AA range:191-240
Specificity :	CD93 Polyclonal Antibody detects endogenous levels of CD93 protein.
Formulation :	Liquid in PBS containing 50% glycerol, 0.5% BSA and 0.02% sodium azide.
Source :	Rabbit
Dilution :	Western Blot: 1/500 - 1/2000. ELISA: 1/10000. Not yet tested in other applications.
Purification :	The antibody was affinity-purified from rabbit antiserum by affinity-chromatography using epitope-specific immunogen.
Concentration :	1 mg/ml
Storage_stability :	-20°C/1 year
Msds :	MSDS_Antibody.pdf



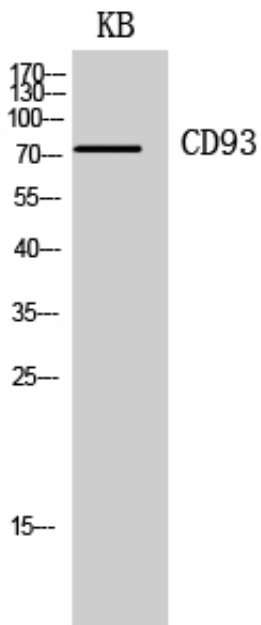
Other_name : CD93; C1QR1; MXRA4; Complement component C1q receptor; C1q/MBL/SPA receptor; C1qR; C1qR(p); C1qRp; CDw93; Complement component 1 q subcomponent receptor 1; Matrix-remodeling-associated protein 4; CD93

Molecular Weight : 72KD

Product Images



Western Blot analysis of KB cells using CD93 Polyclonal Antibody.. Secondary antibody was diluted at 1:20000



Western Blot analysis of KB cells using CD93 Polyclonal Antibody. Secondary antibody was diluted at 1:20000