

## CD96 Polyclonal Antibody

Catalog_no :	AT5598
Applications :	WB,ELISA
Reactivity :	Human
Category :	抗原抗体
Size :	100µg/50µg/20µg
Gene_name :	CD96
Protein_name :	T-cell surface protein tactile
Humangene_id :	<a href="#">10225</a>
Humanswissprot_no :	<a href="#">P40200</a>
Mousegene_id :	
Mouseswissprot_no :	<a href="#">Q3U0X8</a>
Ratgene_id :	
Ratswissprot_no :	
Immunogen :	The antiserum was produced against synthesized peptide derived from the Internal region of human CD96. AA range:291-340
Specificity :	CD96 Polyclonal Antibody detects endogenous levels of CD96 protein.
Formulation :	Liquid in PBS containing 50% glycerol, 0.5% BSA and 0.02% sodium azide.
Source :	Rabbit
Dilution :	Western Blot: 1/500 - 1/2000. ELISA: 1/10000. Not yet tested in other applications.
Purification :	The antibody was affinity-purified from rabbit antiserum by affinity-chromatography using epitope-specific immunogen.
Concentration :	1 mg/ml
Storage_stability :	-20°C/1 year
Msds :	<a href="#">MSDS_Antibody.pdf</a>



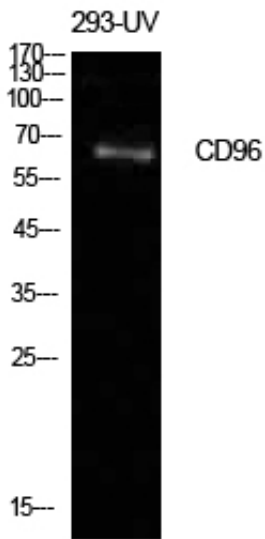
Other\_name : CD96; T-cell surface protein tactile; Cell surface antigen CD96; T cell-activated increased late expression protein; CD96

---

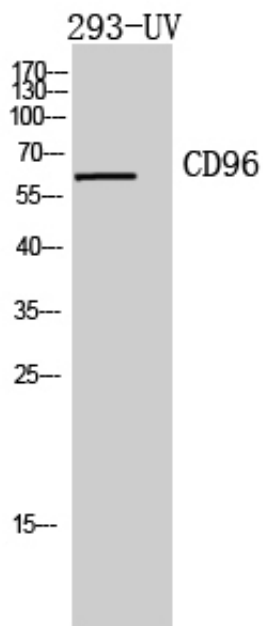
Molecular Weight : 65KD

---

## Product Images



Western Blot analysis of 293-UV cells using CD96 Polyclonal Antibody. Antibody was diluted at 1:500. Secondary antibody was diluted at 1:20000



Western Blot analysis of 293-UV cells using CD96 Polyclonal Antibody diluted at 1 : 500. Secondary antibody was diluted at 1:20000