

## CD101 Polyclonal Antibody

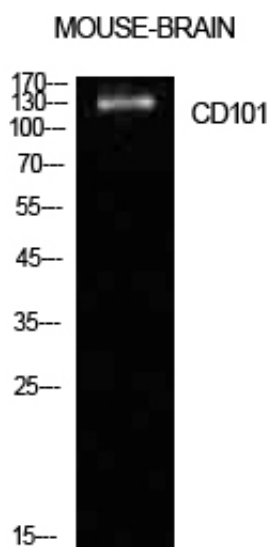
Catalog_no :	AT5600
Applications :	WB,ELISA
Reactivity :	Human
Category :	抗原抗体
Size :	100µg/50µg/20µg
Gene_name :	CD101
Protein_name :	Immunoglobulin superfamily member 2
Humangene_id :	<a href="#">9398</a>
Humanswissprot_no :	<a href="#">Q93033</a>
Mousegene_id :	
Mouseswissprot_no :	<a href="#">A8E0Y8</a>
Ratgene_id :	
Ratswissprot_no :	
Immunogen :	The antiserum was produced against synthesized peptide derived from the Internal region of human CD101. AA range:731-780
Specificity :	CD101 Polyclonal Antibody detects endogenous levels of CD101 protein.
Formulation :	Liquid in PBS containing 50% glycerol, 0.5% BSA and 0.02% sodium azide.
Source :	Rabbit
Dilution :	Western Blot: 1/500 - 1/2000. ELISA: 1/10000. Not yet tested in other applications.
Purification :	The antibody was affinity-purified from rabbit antiserum by affinity-chromatography using epitope-specific immunogen.
Concentration :	1 mg/ml
Storage_stability :	-20°C/1 year
Msds :	<a href="#">MSDS_Antibody.pdf</a>



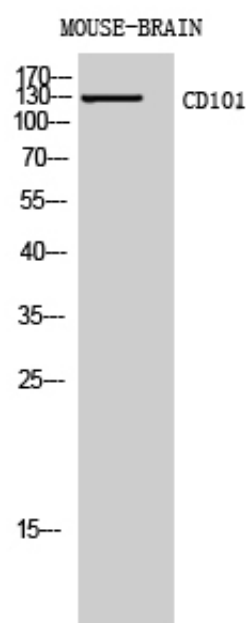
Other\_name : CD101; EWI101; IGSF2; V7; Immunoglobulin superfamily member 2; IgSF2; Cell surface glycoprotein V7; Glu-Trp-Ile EWI motif-containing protein 101; EWI-101; CD101

Molecular Weight : 130KD

## Product Images



Western Blot analysis of mouse brain cells using CD101 Polyclonal Antibody. Antibody was diluted at 1:1000. Secondary antibody was diluted at 1:20000



Western Blot analysis of MOUSE-BRAIN cells using CD101 Polyclonal Antibody diluted at 1 : 1000. Secondary antibody was diluted at 1:20000