



## Nectin 1 Polyclonal Antibody

Catalog_no :	AT5602
Applications :	WB,ELISA
Reactivity :	Human,Mouse,Rat
Category :	抗原抗体
Size :	100µg/50µg/20µg
Gene_name :	PVRL1
Protein_name :	Poliovirus receptor-related protein 1
Humangene_id	<a href="#">5818</a>
:	
Humanswissprot	<a href="#">Q15223</a>
_no :	
Mousegene_id :	<a href="#">58235</a>
Mouseswissprot	<a href="#">Q9JKF6</a>
_no :	
Ratgene_id :	
Ratswissprot_no	
:	
Immunogen :	The antiserum was produced against synthesized peptide derived from the Internal region of human PVRL1. AA range:81-130
Specificity :	Nectin 1 Polyclonal Antibody detects endogenous levels of Nectin 1 protein.
Formulation :	Liquid in PBS containing 50% glycerol, 0.5% BSA and 0.02% sodium azide.
Source :	Rabbit
Dilution :	Western Blot: 1/500 - 1/2000. ELISA: 1/10000. Not yet tested in other applications.
Purification :	The antibody was affinity-purified from rabbit antiserum by affinity-chromatography using epitope-specific immunogen.
Concentration :	1 mg/ml
Storage_stability	-20°C/1 year
:	
Msds :	<a href="#">MSDS_Antibody.pdf</a>

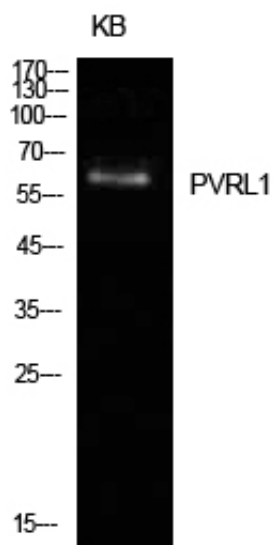


Other\_name : PVRL1; HVEC; PRR1; Poliovirus receptor-related protein 1; Herpes virus entry mediator C; Herpesvirus entry mediator C; HveC; Herpesvirus Ig-like receptor; HIgR; Nectin-1; CD111

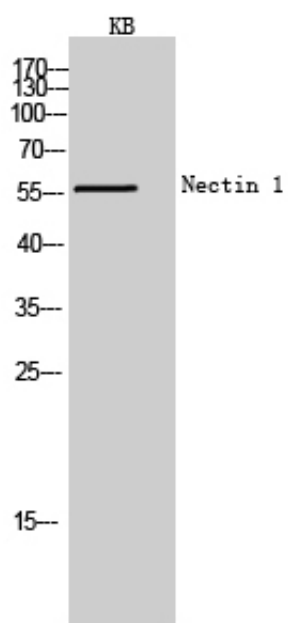
Molecular Weight : 57KD

---

## Product Images



Western Blot analysis of KB cells using Nectin 1 Polyclonal Antibody.. Secondary antibody was diluted at 1:20000



Western Blot analysis of KB cells using Nectin 1 Polyclonal Antibody. Secondary antibody was diluted at 1:20000