



## Nectin 2 Polyclonal Antibody

|                   |   |
|-------------------|---|
| Catalog_no :      | AT5603  |
| Applications :    | WB,ELISA  |
| Reactivity :      | Human   |
| Category :        | 抗原抗体  |
| Size :            | 100µg/50µg/20µg   |
| Gene_name :       | PVRL2   |
| Protein_name :    | Poliovirus receptor-related protein 2   |
| Humangene_id      | <a href="#">5819</a>  |
| :                 |   |
| Humanswissprot    | <a href="#">Q92692</a>  |
| _no :             |   |
| Mousegene_id :    |   |
| Mouseswissprot    | <a href="#">P32507</a>  |
| _no :             |   |
| Ratgene_id :      |   |
| Ratswissprot_no   |   |
| :                 |   |
| Immunogen :       | Synthesized peptide derived from Poliovirus receptor-related protein 2 at AA range: 151-200                           |
| Specificity :     | Nectin 2 Polyclonal Antibody detects endogenous levels of Nectin 2 protein.   |
| Formulation :     | Liquid in PBS containing 50% glycerol, 0.5% BSA and 0.02% sodium azide.   |
| Source :          | Rabbit  |
| Dilution :        | Western Blot: 1/500 - 1/2000. ELISA: 1/10000. Not yet tested in other applications.                                   |
| Purification :    | The antibody was affinity-purified from rabbit antiserum by affinity-chromatography using epitope-specific immunogen. |
| Concentration :   | 1 mg/ml   |
| Storage_stability | -20°C/1 year  |
| :                 |   |
| Msds :            | <a href="#">MSDS_Antibody.pdf</a>   |



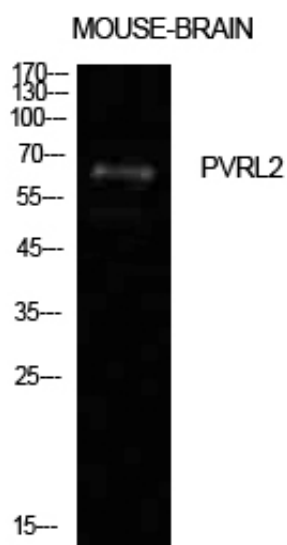
Other\_name : PVRL2; HVEB; PRR2; Poliovirus receptor-related protein 2; Herpes virus entry mediator B; Herpesvirus entry mediator B; HveB; Nectin-2; CD112

---

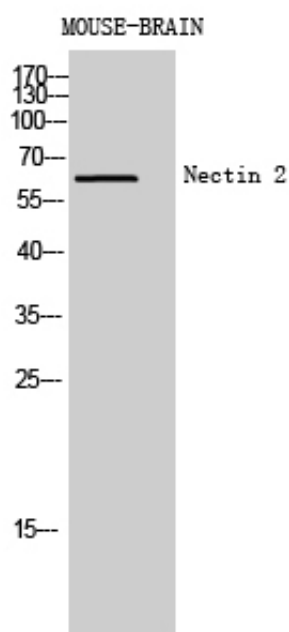
Molecular Weight : 65KD

---

## Product Images



Western Blot analysis of mouse brain cells using Nectin 2 Polyclonal Antibody. Antibody was diluted at 1:500. Secondary antibody was diluted at 1:20000



Western Blot analysis of MOUSE-BRAIN cells using Nectin 2 Polyclonal Antibody diluted at 1 : 500. Secondary antibody was diluted at 1:20000