



IL-9R Polyclonal Antibody

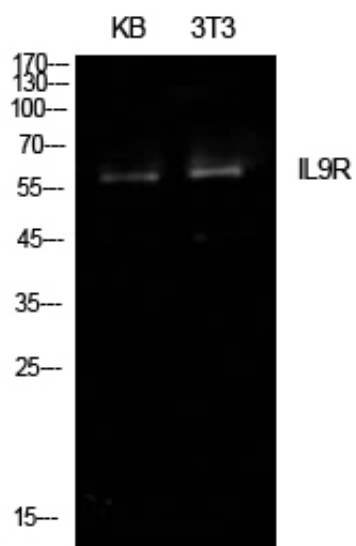
Catalog_no :	AT5606
Applications :	WB,ELISA
Reactivity :	Human
Category :	抗原抗体
Size :	100µg/50µg/20µg
Gene_name :	IL9R
Protein_name :	Interleukin-9 receptor
Humangene_id :	3581
Humanswissprot_no :	Q01113
Mousegene_id :	
Mouseswissprot_no :	Q01114
Ratgene_id :	
Ratswissprot_no :	
Immunogen :	The antiserum was produced against synthesized peptide derived from the Internal region of human IL9R. AA range:201-250
Specificity :	IL-9R Polyclonal Antibody detects endogenous levels of IL-9R protein.
Formulation :	Liquid in PBS containing 50% glycerol, 0.5% BSA and 0.02% sodium azide.
Source :	Rabbit
Dilution :	Western Blot: 1/500 - 1/2000. ELISA: 1/10000. Not yet tested in other applications.
Purification :	The antibody was affinity-purified from rabbit antiserum by affinity-chromatography using epitope-specific immunogen.
Concentration :	1 mg/ml
Storage_stability :	-20°C/1 year
Msds :	MSDS_Antibody.pdf



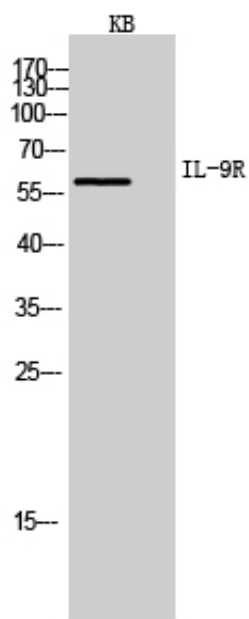
Other_name : IL9R; Interleukin-9 receptor; IL-9 receptor; IL-9R; CD129

Molecular Weight : 58KD

Product Images



Western Blot analysis of KB, NIH-3T3 cells using IL-9R Polyclonal Antibody.. Secondary antibody was diluted at 1:20000



Western Blot analysis of KB cells using IL-9R Polyclonal Antibody. Secondary antibody was diluted at 1:20000