



## Ron $\alpha$ Polyclonal Antibody

Catalog_no :	AT5609
Applications :	WB,ELISA
Reactivity :	Human
Category :	抗原抗体
Size :	100 $\mu$ g/50 $\mu$ g/20 $\mu$ g
Gene_name :	MST1R
Protein_name :	Macrophage-stimulating protein receptor
Humangene_id :	<a href="#">4486</a>
Humanswissprot_no :	<a href="#">Q04912</a>
Mousegene_id :	
Mouseswissprot_no :	<a href="#">Q62190</a>
Ratgene_id :	
Ratswissprot_no :	
Immunogen :	The antiserum was produced against synthesized peptide derived from the N-terminal region of human MST1R. AA range:31-80
Specificity :	Ron $\alpha$ Polyclonal Antibody detects endogenous levels of Ron $\alpha$ protein.
Formulation :	Liquid in PBS containing 50% glycerol, 0.5% BSA and 0.02% sodium azide.
Source :	Rabbit
Dilution :	Western Blot: 1/500 - 1/2000. ELISA: 1/10000. Not yet tested in other applications.
Purification :	The antibody was affinity-purified from rabbit antiserum by affinity-chromatography using epitope-specific immunogen.
Concentration :	1 mg/ml
Storage_stability :	-20°C/1 year
Msds :	<a href="#">MSDS_Antibody.pdf</a>



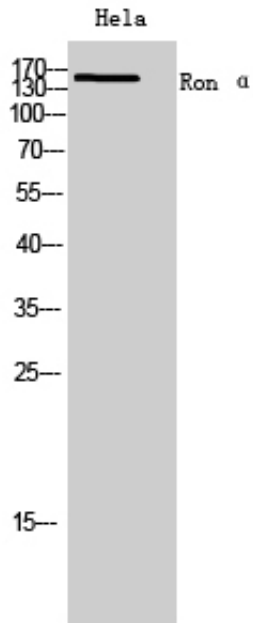
Other\_name : MST1R; PTK8; RON; Macrophage-stimulating protein receptor; MSP receptor; CDw136;  
Protein-tyrosine kinase 8; p185-Ron; CD136

---

Molecular Weight : 150KD

---

## Product Images



Western Blot analysis of HeLa cells using Ron  $\alpha$  Polyclonal Antibody.. Secondary antibody was diluted at 1:20000