



CD138 Polyclonal Antibody

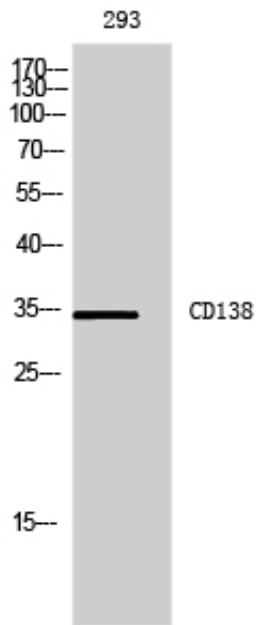
Catalog_no :	AT5610
Applications :	WB,IHC-p,ELISA
Reactivity :	Human
Category :	抗原抗体
Size :	100µg/50µg/20µg
Gene_name :	SDC1
Protein_name :	Syndecan-1
Humangene_id :	6382
Humanswissprot_no :	P18827
Mousegene_id :	
Mouseswissprot_no :	P18828
Ratgene_id :	
Ratswissprot_no :	
Immunogen :	The antiserum was produced against synthesized peptide derived from the Internal region of human SDC1. AA range:191-240
Specificity :	CD138 Polyclonal Antibody detects endogenous levels of CD138 protein.
Formulation :	Liquid in PBS containing 50% glycerol, 0.5% BSA and 0.02% sodium azide.
Source :	Rabbit
Dilution :	Western Blot: 1/500 - 1/2000. IHC-p: 1:100-1:300. ELISA: 1/10000. Not yet tested in other applications.
Purification :	The antibody was affinity-purified from rabbit antiserum by affinity-chromatography using epitope-specific immunogen.
Concentration :	1 mg/ml
Storage_stability :	-20°C/1 year
Msds :	MSDS_Antibody.pdf



Other_name : SDC1; SDC; Syndecan-1; SYND1; CD138

Molecular Weight : 34KD

Product Images



Western Blot analysis of 293 cells using CD138 Polyclonal Antibody.. Secondary antibody was diluted at 1:20000

