

BST-2 Polyclonal Antibody

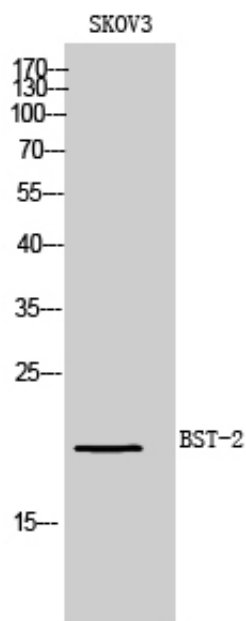
Catalog_no :	AT5612
Applications :	WB,IHC-p,ELISA
Reactivity :	Human
Category :	抗原抗体
Size :	100µg/50µg/20µg
Gene_name :	BST2
Protein_name :	Bone marrow stromal antigen 2
Humangene_id :	684
Humanswissprot_no :	Q10589
Mousegene_id :	
Mouseswissprot_no :	Q8R2Q8
Ratgene_id :	
Ratswissprot_no :	
Immunogen :	The antiserum was produced against synthesized peptide derived from the Internal region of human BST2. AA range:101-150
Specificity :	BST-2 Polyclonal Antibody detects endogenous levels of BST-2 protein.
Formulation :	Liquid in PBS containing 50% glycerol, 0.5% BSA and 0.02% sodium azide.
Source :	Rabbit
Dilution :	Western Blot: 1/500 - 1/2000. IHC-p: 1:100-1:300. ELISA: 1/10000. Not yet tested in other applications.
Purification :	The antibody was affinity-purified from rabbit antiserum by affinity-chromatography using epitope-specific immunogen.
Concentration :	1 mg/ml
Storage_stability :	-20°C/1 year
Msds :	MSDS_Antibody.pdf



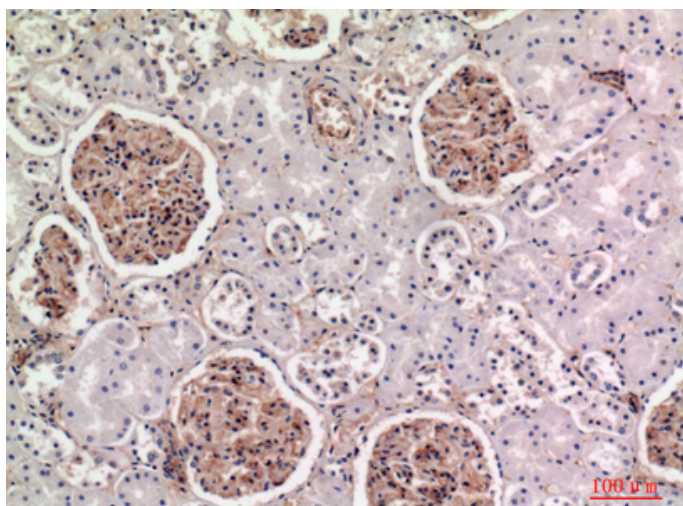
Other_name : BST2; Bone marrow stromal antigen 2; BST-2; HM1.24 antigen; Tetherin; CD317

Molecular Weight : 20KD

Product Images



Western Blot analysis of SKOV3 cells using BST-2 Polyclonal Antibody.. Secondary antibody was diluted at 1:20000



Immunohistochemical analysis of paraffin-embedded human-kidney, antibody was diluted at 1:100