

Blr1 Polyclonal Antibody

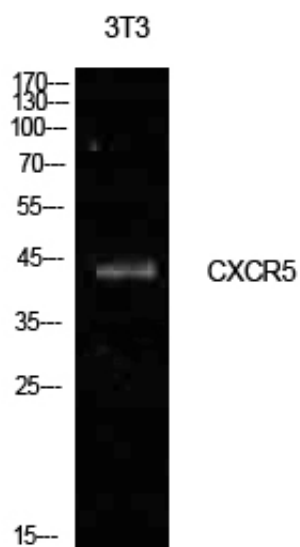
Catalog_no :	AT5613
Applications :	WB,ELISA
Reactivity :	Human
Category :	抗原抗体
Size :	100µg/50µg/20µg
Gene_name :	CXCR5
Protein_name :	C-X-C chemokine receptor type 5
Humangene_id :	643
Humanswissprot_no :	P32302
Mousegene_id :	
Mouseswissprot_no :	Q04683
Ratgene_id :	
Ratswissprot_no :	
Immunogen :	The antiserum was produced against synthesized peptide derived from the N-terminal region of human CXCR5. AA range:1-50
Specificity :	Blr1 Polyclonal Antibody detects endogenous levels of Blr1 protein.
Formulation :	Liquid in PBS containing 50% glycerol, 0.5% BSA and 0.02% sodium azide.
Source :	Rabbit
Dilution :	Western Blot: 1/500 - 1/2000. ELISA: 1/10000. Not yet tested in other applications.
Purification :	The antibody was affinity-purified from rabbit antiserum by affinity-chromatography using epitope-specific immunogen.
Concentration :	1 mg/ml
Storage_stability :	-20°C/1 year
Msds :	MSDS_Antibody.pdf



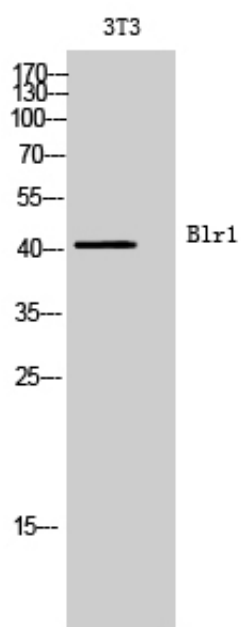
Other_name : CXCR5; BLR1; MDR15; C-X-C chemokine receptor type 5; CXC-R5; CXCR-5; Burkitt lymphoma receptor 1; Monocyte-derived receptor 15; MDR-15; CD185

Molecular Weight : 42KD

Product Images



Western Blot analysis of NIH-3T3 cells using Blr1 Polyclonal Antibody.. Secondary antibody was diluted at 1:20000



Western Blot analysis of 3T3 cells using Blr1 Polyclonal Antibody. Secondary antibody was diluted at 1:20000