



## IL-12R $\beta$ 1 Polyclonal Antibody

Catalog_no :	AT5614
Applications :	WB,ELISA
Reactivity :	Human
Category :	抗原抗体
Size :	100 $\mu$ g/50 $\mu$ g/20 $\mu$ g
Gene_name :	IL12RB1
Protein_name :	Interleukin-12 receptor subunit beta-1
Humangene_id :	<a href="#">3594</a>
Humanswissprot_no :	<a href="#">P42701</a>
Mousegene_id :	
Mouseswissprot_no :	<a href="#">Q60837</a>
Ratgene_id :	
Ratswissprot_no :	
Immunogen :	The antiserum was produced against synthesized peptide derived from the Internal region of human IL12RB1. AA range:211-260
Specificity :	IL-12R $\beta$ 1 Polyclonal Antibody detects endogenous levels of IL-12R $\beta$ 1 protein.
Formulation :	Liquid in PBS containing 50% glycerol, 0.5% BSA and 0.02% sodium azide.
Source :	Rabbit
Dilution :	Western Blot: 1/500 - 1/2000. ELISA: 1/10000. Not yet tested in other applications.
Purification :	The antibody was affinity-purified from rabbit antiserum by affinity-chromatography using epitope-specific immunogen.
Concentration :	1 mg/ml
Storage_stability :	-20°C/1 year
Msds :	<a href="#">MSDS_Antibody.pdf</a>



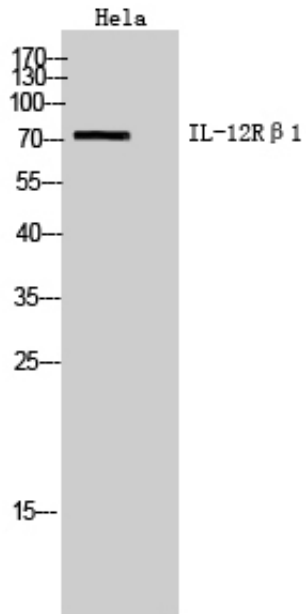
Other\_name : IL12RB1; IL12R; IL12RB; Interleukin-12 receptor subunit beta-1; IL-12 receptor subunit beta-1; IL-12R subunit beta-1; IL-12R-beta-1; IL-12RB1; IL-12 receptor beta component; CD212

---

Molecular Weight : 73KD

---

## Product Images



Western Blot analysis of HeLa cells using IL-12R $\beta$ 1 Polyclonal Antibody.. Secondary antibody was diluted at 1:20000