

CD244 Polyclonal Antibody

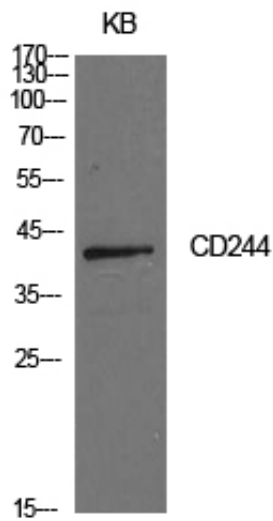
Catalog_no :	AT5615
Applications :	WB,IHC-p,ELISA
Reactivity :	Human
Category :	抗原抗体
Size :	100µg/50µg/20µg
Gene_name :	CD244
Protein_name :	Natural killer cell receptor 2B4
Humangene_id :	51744
Humanswissprot_no :	Q9BZW8
Mousegene_id :	
Mouseswissprot_no :	Q07763
Ratgene_id :	
Ratswissprot_no :	
Immunogen :	The antiserum was produced against synthesized peptide derived from the Internal region of human CD244. AA range:101-150
Specificity :	CD244 Polyclonal Antibody detects endogenous levels of CD244 protein.
Formulation :	Liquid in PBS containing 50% glycerol, 0.5% BSA and 0.02% sodium azide.
Source :	Rabbit
Dilution :	Western Blot: 1/500 - 1/2000. IHC-p: 1:100-1:300. ELISA: 1/10000. Not yet tested in other applications.
Purification :	The antibody was affinity-purified from rabbit antiserum by affinity-chromatography using epitope-specific immunogen.
Concentration :	1 mg/ml
Storage_stability :	-20°C/1 year
Msds :	MSDS_Antibody.pdf



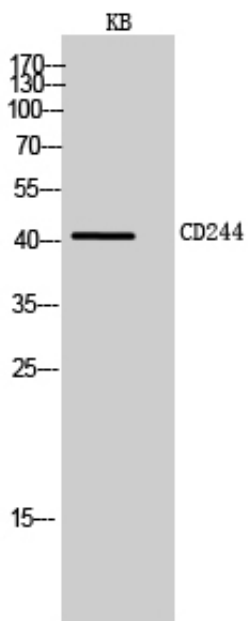
Other_name : CD244; 2B4; Natural killer cell receptor 2B4; NK cell activation-inducing ligand; NAIL; NK cell type I receptor protein 2B4; NKR2B4; h2B4; CD244

Molecular Weight : 42KD

Product Images

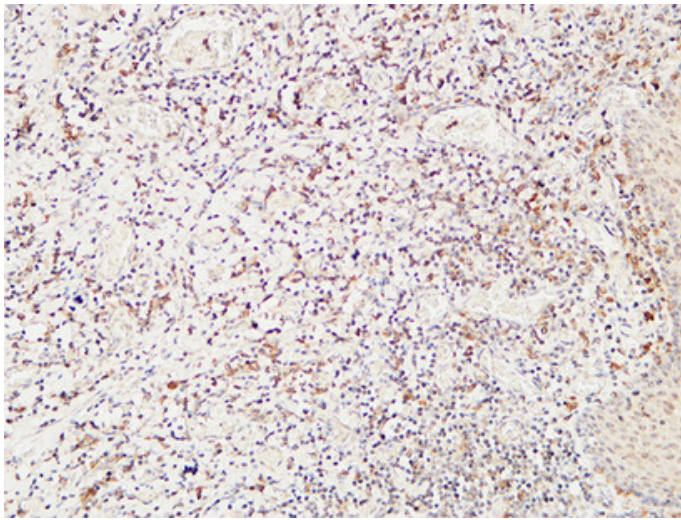
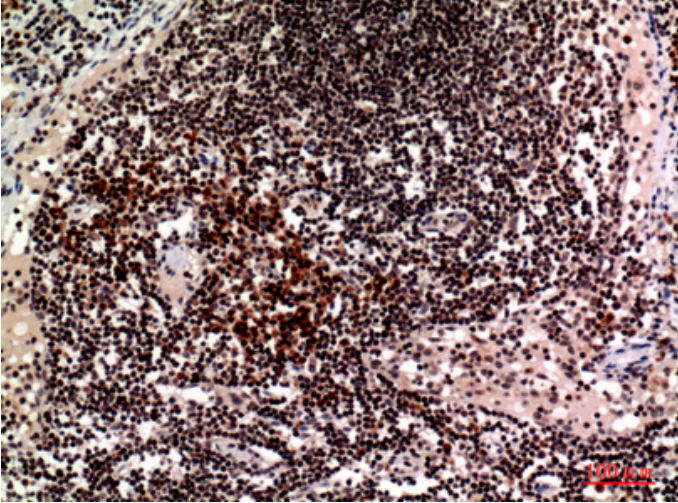


Western Blot analysis of KB cells using CD244 Polyclonal Antibody.. Secondary antibody was diluted at 1:20000

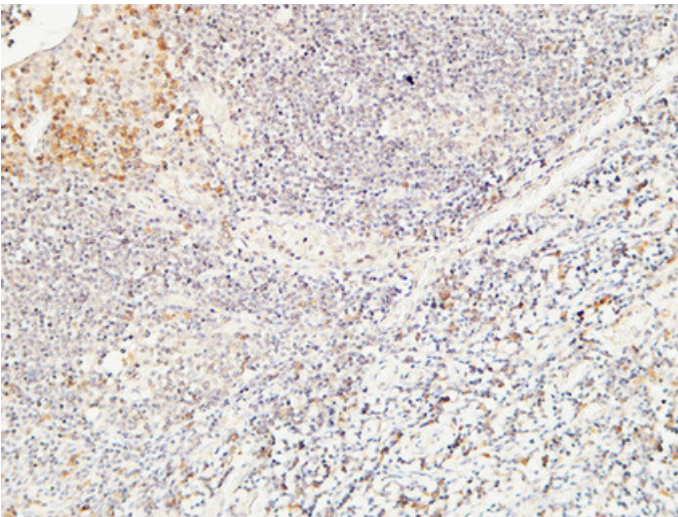


Western Blot analysis of KB cells using CD244 Polyclonal Antibody. Secondary antibody was diluted at 1:20000

Immunohistochemical analysis of paraffin-embedded human-lymph, antibody was diluted at 1:100



Immunohistochemical analysis of paraffin-embedded Human Amygdala. 1, Antibody was diluted at 1:200(4°,overnight). 2, High-pressure and temperature EDTA, pH8.0 was used for antigen retrieval. 3,Secondary antibody was diluted at 1:200(room temperature, 30min).



Immunohistochemical analysis of paraffin-embedded Human Amygdala. 1, Antibody was diluted at 1:200(4°,overnight). 2, High-pressure and temperature EDTA, pH8.0 was used for antigen retrieval. 3,Secondary antibody was diluted at 1:200(room temperature, 30min).

Immunohistochemical analysis of paraffin-embedded Human Amygdala. 1, Antibody was diluted at 1:200(4°,overnight). 2, High-pressure and temperature EDTA, pH8.0 was used for antigen retrieval. 3,Secondary antibody was diluted at 1:200(room temperature, 30min).

