



IL-13R α 2 Polyclonal Antibody

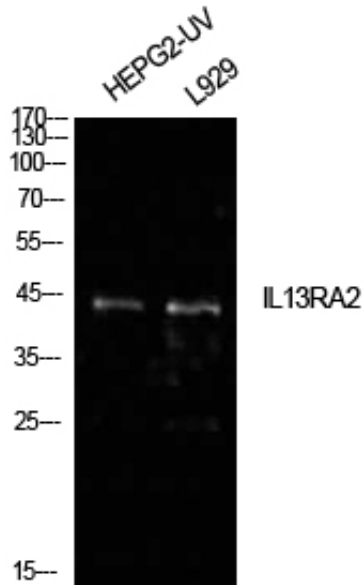
Catalog_no :	AT5616
Applications :	WB,IHC-p,ELISA
Reactivity :	Human
Category :	抗原抗体
Size :	100 μ g/50 μ g/20 μ g
Gene_name :	IL13RA2
Protein_name :	Interleukin-13 receptor subunit alpha-2
Humangene_id :	3598
Humanswissprot_no :	Q14627
Mousegene_id :	
Mouseswissprot_no :	O88786
Ratgene_id :	
Ratswissprot_no :	
Immunogen :	Synthesized peptide derived from Interleukin-13 receptor subunit alpha-2 at AA range: 241-290
Specificity :	IL-13R α 2 Polyclonal Antibody detects endogenous levels of IL-13R α 2 protein.
Formulation :	Liquid in PBS containing 50% glycerol, 0.5% BSA and 0.02% sodium azide.
Source :	Rabbit
Dilution :	Western Blot: 1/500 - 1/2000. IHC-p: 1:100-1:300. ELISA: 1/10000. Not yet tested in other applications.
Purification :	The antibody was affinity-purified from rabbit antiserum by affinity-chromatography using epitope-specific immunogen.
Concentration :	1 mg/ml
Storage_stability :	-20°C/1 year
Msds :	MSDS_Antibody.pdf



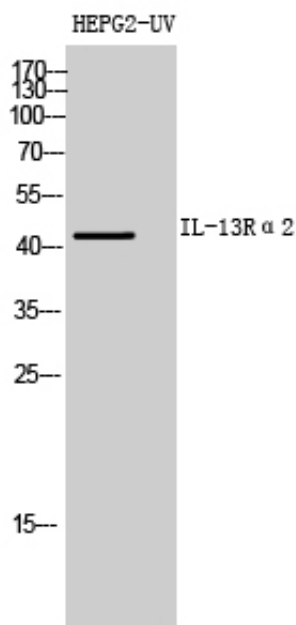
Other_name : IL13RA2; IL13R; Interleukin-13 receptor subunit alpha-2; IL-13 receptor subunit alpha-2;
IL-13R subunit alpha-2; IL-13R-alpha-2; IL-13RA2; Interleukin-13-binding protein;
CD213a2

Molecular Weight : 44KD

Product Images



Western Blot analysis of HepG2(UV), L929 cells using IL-13Ra2 Polyclonal Antibody. Antibody was diluted at 1:500. Secondary antibody was diluted at 1:20000



Western Blot analysis of HEPG2-UV cells using IL-13Ra2 Polyclonal Antibody diluted at 1 : 500. Secondary antibody was diluted at 1:20000

Immunohistochemical analysis of paraffin-embedded human-lung, antibody was diluted at 1:100

