

Mucin 1 Polyclonal Antibody

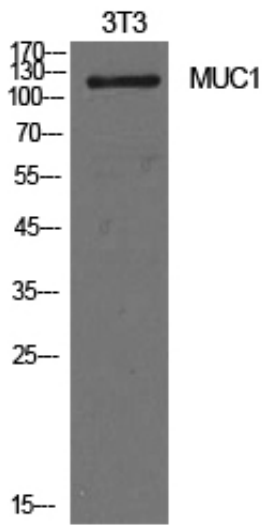
Catalog_no :	AT5617
Applications :	WB,IHC-p,ELISA
Reactivity :	Human,Mouse,Rat
Category :	抗原抗体
Size :	100µg/50µg/20µg
Gene_name :	MUC1
Protein_name :	Mucin-1
Humangene_id :	4582
Humanswissprot_no :	P15941
Mousegene_id :	17829
Mouseswissprot_no :	Q02496
Ratgene_id :	
Ratswissprot_no :	
Immunogen :	The antiserum was produced against synthesized peptide derived from the Internal region of human MUC1. AA range:1021-1070
Specificity :	Mucin 1 Polyclonal Antibody detects endogenous levels of Mucin 1 protein.
Formulation :	Liquid in PBS containing 50% glycerol, 0.5% BSA and 0.02% sodium azide.
Source :	Rabbit
Dilution :	Western Blot: 1/500 - 1/2000. IHC-p: 1:100-1:300. ELISA: 1/10000. Not yet tested in other applications.
Purification :	The antibody was affinity-purified from rabbit antiserum by affinity-chromatography using epitope-specific immunogen.
Concentration :	1 mg/ml
Storage_stability :	-20°C/1 year
Msds :	MSDS_Antibody.pdf



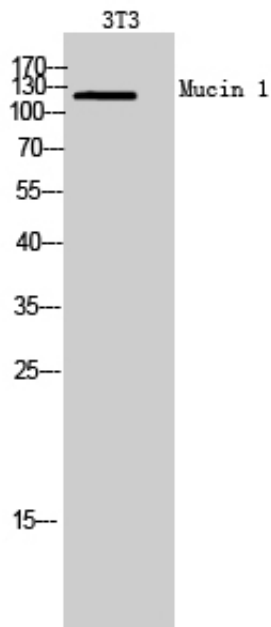
Other_name : MUC1; PUM; Mucin-1; MUC-1; Breast carcinoma-associated antigen DF3; Carcinoma-associated mucin; Episialin; H23AG; Krebs von den Lungen-6; KL-6; PEMT; Peanut-reactive urinary mucin; PUM; Polymorphic epithelial mucin; PEM; Tumor-associated epithelial membrane antigen; EMA; Tumor-associated mucin; CD227

Molecular Weight : 122KD

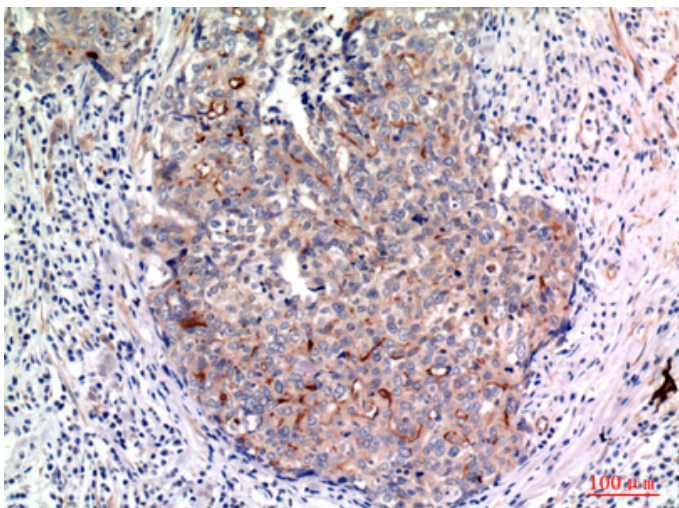
Product Images



Western Blot analysis of NIH-3T3 cells using Mucin 1 Polyclonal Antibody.. Secondary antibody was diluted at 1:20000

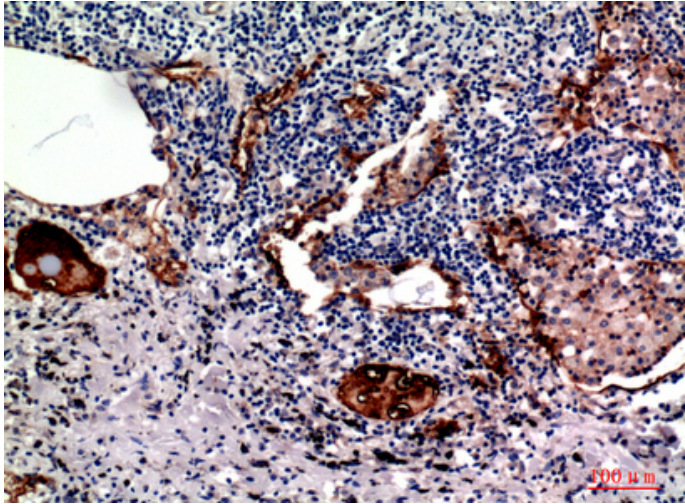


Western Blot analysis of 3T3 cells using Mucin 1 Polyclonal Antibody. Secondary antibody was diluted at 1:20000



Immunohistochemical analysis of paraffin-embedded human breast cancer, antibody was diluted at 1:100

Immunohistochemical analysis of paraffin-embedded



human-lung, antibody was diluted at 1:100