

CD158a Polyclonal Antibody

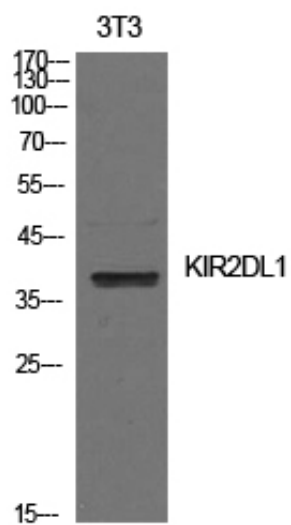
Catalog_no :	AT5618
Applications :	WB,ELISA
Reactivity :	Human
Category :	抗原抗体
Size :	100µg/50µg/20µg
Gene_name :	KIR2DL1
Protein_name :	Killer cell immunoglobulin-like receptor 2DL1
Humangene_id :	3802
Humanswissprot_no :	P43626
Ratgene_id :	
Ratswissprot_no :	
Immunogen :	The antiserum was produced against synthesized peptide derived from the Internal region of human KIR2DL1. AA range:131-180
Specificity :	CD158a Polyclonal Antibody detects endogenous levels of CD158a protein.
Formulation :	Liquid in PBS containing 50% glycerol, 0.5% BSA and 0.02% sodium azide.
Source :	Rabbit
Dilution :	Western Blot: 1/500 - 1/2000. ELISA: 1/10000. Not yet tested in other applications.
Purification :	The antibody was affinity-purified from rabbit antiserum by affinity-chromatography using epitope-specific immunogen.
Concentration :	1 mg/ml
Storage_stability :	-20°C/1 year
Msds :	MSDS_Antibody.pdf
Other_name :	KIR2DL1; CD158A; NKAT1; Killer cell immunoglobulin-like receptor 2DL1; CD158 antigen-like family member A; MHC class I NK cell receptor; Natural killer-associated transcript 1; NKAT-1; p58 natural killer cell receptor clones CL-42/47.11; p58 NK receptor CL-42/47.11; p58.1 MHC class-I-specific NK receptor; CD158a



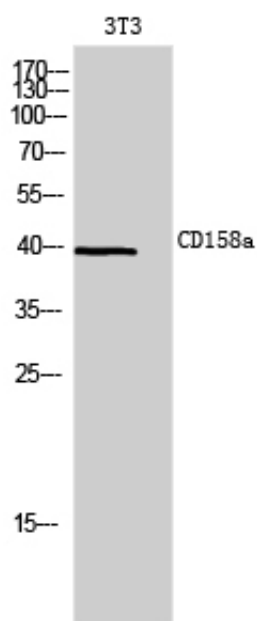
Molecular
Weight :

39KD

Product Images



Western Blot analysis of NIH-3T3 cells using CD158a Polyclonal Antibody.. Secondary antibody was diluted at 1:20000



Western Blot analysis of 3T3 cells using CD158a Polyclonal Antibody. Secondary antibody was diluted at 1:20000