

CD240d Polyclonal Antibody

Catalog_no :	<u>AT5626</u>
Applications :	<u>WB,ELISA</u>
Reactivity :	<u>Human</u>
Category :	<u>抗原抗体</u>
Size :	<u>100µg/50µg/20µg</u>
Gene_name :	<u>RHD</u>
Protein_name :	<u>Blood group Rh(D) polypeptide</u>
Humangene_id :	<u>6007</u>
Humanswissprot_no :	<u>Q02161</u>
Mousegene_id :	<u>19746</u>
Mouseswissprot_no :	<u>Q8CF94</u>
Ratgene_id :	<u>60414</u>
Ratswissprot_no :	<u>O88298</u>
Immunogen :	<u>Synthesized peptide derived from Blood group Rh(D) polypeptide at AA range: 161-210</u>
Specificity :	<u>CD240d Polyclonal Antibody detects endogenous levels of CD240d protein.</u>
Formulation :	<u>Liquid in PBS containing 50% glycerol, 0.5% BSA and 0.02% sodium azide.</u>
Source :	<u>Rabbit</u>
Dilution :	<u>Western Blot: 1/500 - 1/2000. ELISA: 1/10000. Not yet tested in other applications.</u>
Purification :	<u>The antibody was affinity-purified from rabbit antiserum by affinity-chromatography using epitope-specific immunogen.</u>
Concentration :	<u>1 mg/ml</u>
Storage_stability :	<u>-20°C/1 year</u>
Msds :	<u>MSDS_Antibody.pdf</u>
Other_name :	<u>RHD; Blood group Rh(D) polypeptide; RHXIII; Rh polypeptide 2; RhPII; Rhesus D antigen;</u>

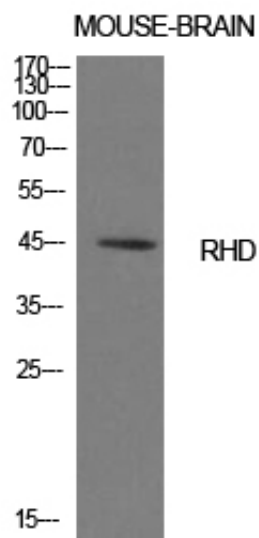


CD240D

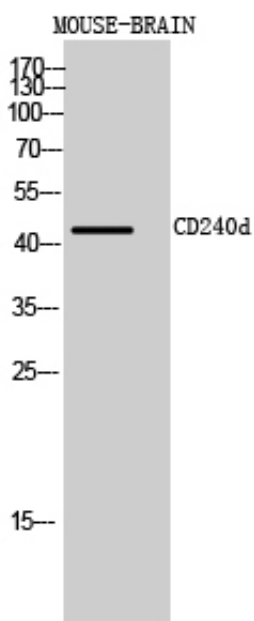
Molecular
Weight :

45KD

Product Images



Western Blot analysis of mouse brain cells using CD240d Polyclonal Antibody. Antibody was diluted at 1:1000. Secondary antibody was diluted at 1:20000



Western Blot analysis of MOUSE-BRAIN cells using CD240d Polyclonal Antibody diluted at 1 : 1000. Secondary antibody was diluted at 1:20000