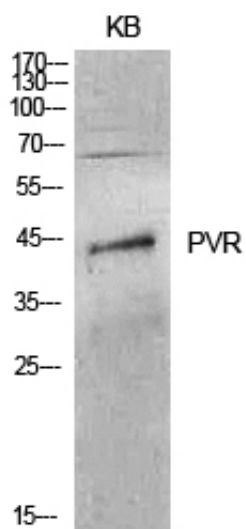




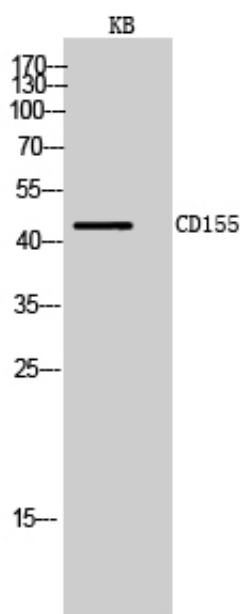
CD155 Polyclonal Antibody

Catalog_no :	AT5628
Applications :	WB,ELISA
Reactivity :	Human,Mouse,Rat
Category :	抗原抗体
Size :	100µg/50µg/20µg
Gene_name :	PVR
Protein_name :	Poliovirus receptor
Humangene_id :	5817
Humanswissprot_no :	P15151
Ratgene_id :	
Ratswissprot_no :	
Immunogen :	The antiserum was produced against synthesized peptide derived from the Internal region of human PVR. AA range:81-130
Specificity :	CD155 Polyclonal Antibody detects endogenous levels of CD155 protein.
Formulation :	Liquid in PBS containing 50% glycerol, 0.5% BSA and 0.02% sodium azide.
Source :	Rabbit
Dilution :	Western Blot: 1/500 - 1/2000. ELISA: 1/10000. Not yet tested in other applications.
Purification :	The antibody was affinity-purified from rabbit antiserum by affinity-chromatography using epitope-specific immunogen.
Concentration :	1 mg/ml
Storage_stability :	-20°C/1 year
Msds :	MSDS_Antibody.pdf
Other_name :	PVR; PVS; Poliovirus receptor; Nectin-like protein 5; NECL-5; CD155
Molecular Weight :	45KD

Product Images



Western Blot analysis of KB cells using CD155 Polyclonal Antibody.. Secondary antibody was diluted at 1:20000



Western Blot analysis of KB cells using CD155 Polyclonal Antibody. Secondary antibody was diluted at 1:20000