

## CD180 Polyclonal Antibody

Catalog_no :	AT5629
Applications :	WB,ELISA
Reactivity :	Human,Mouse,Rat
Category :	抗原抗体
Size :	100µg/50µg/20µg
Gene_name :	CD180
Protein_name :	CD180 antigen
Humangene_id :	<a href="#">4064</a>
Humanswissprot_no :	<a href="#">Q99467</a>
Mousegene_id :	<a href="#">17079</a>
Mouseswissprot_no :	<a href="#">Q62192</a>
Ratgene_id :	
Ratswissprot_no :	
Immunogen :	Synthesized peptide derived from CD180 antigen at AA range: 221-270
Specificity :	CD180 Polyclonal Antibody detects endogenous levels of CD180 protein.
Formulation :	Liquid in PBS containing 50% glycerol, 0.5% BSA and 0.02% sodium azide.
Source :	Rabbit
Dilution :	Western Blot: 1/500 - 1/2000. ELISA: 1/10000. Not yet tested in other applications.
Purification :	The antibody was affinity-purified from rabbit antiserum by affinity-chromatography using epitope-specific immunogen.
Concentration :	1 mg/ml
Storage_stability :	-20°C/1 year
Msds :	<a href="#">MSDS_Antibody.pdf</a>
Other_name :	CD180; LY64; RP105; CD180 antigen; Lymphocyte antigen 64; Radioprotective 105 kDa



protein; CD180

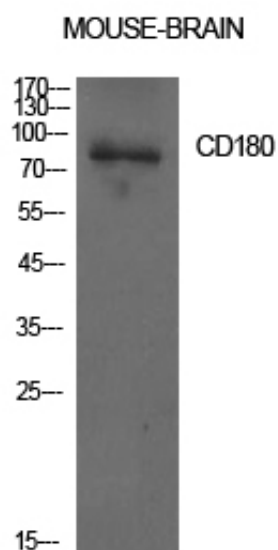
---

Molecular  
Weight :

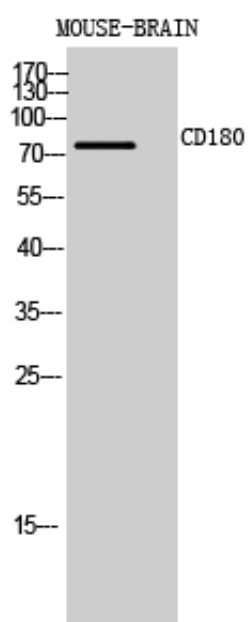
75KD

---

## Product Images



Western Blot analysis of mouse brain cells using CD180 Polyclonal Antibody. Antibody was diluted at 1:1000. Secondary antibody was diluted at 1:20000



Western Blot analysis of MOUSE-BRAIN cells using CD180 Polyclonal Antibody diluted at 1 : 1000. Secondary antibody was diluted at 1:20000