

IL-10R $\alpha$  Polyclonal Antibody

Catalog_no :	AT5630
Applications :	WB,ELISA
Reactivity :	Human
Category :	抗原抗体
Size :	100 $\mu$ g/50 $\mu$ g/20 $\mu$ g
Gene_name :	IL10RA
Protein_name :	Interleukin-10 receptor subunit alpha
Humangene_id :	<a href="#">3587</a>
Humanswissprot_no :	<a href="#">Q13651</a>
Mousegene_id :	<a href="#">16154</a>
Mouseswissprot_no :	<a href="#">Q61727</a>
Ratgene_id :	
Ratswissprot_no :	
Immunogen :	The antiserum was produced against synthesized peptide derived from the Internal region of human IL10RA. AA range:151-200
Specificity :	IL-10R $\alpha$ Polyclonal Antibody detects endogenous levels of IL-10R $\alpha$ protein.
Formulation :	Liquid in PBS containing 50% glycerol, 0.5% BSA and 0.02% sodium azide.
Source :	Rabbit
Dilution :	Western Blot: 1/500 - 1/2000. ELISA: 1/10000. Not yet tested in other applications.
Purification :	The antibody was affinity-purified from rabbit antiserum by affinity-chromatography using epitope-specific immunogen.
Concentration :	1 mg/ml
Storage_stability :	-20°C/1 year
Msds :	<a href="#">MSDS_Antibody.pdf</a>



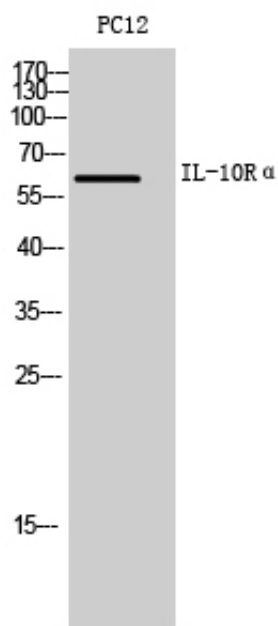
Other\_name : IL10RA; IL10R; Interleukin-10 receptor subunit alpha; IL-10 receptor subunit alpha; IL-10R subunit alpha; IL-10RA; CDw210a; Interleukin-10 receptor subunit 1; IL-10R subunit 1; IL-10R1; CD210

---

Molecular Weight : 63KD

---

## Product Images



Western Blot analysis of PC12 cells using IL-10R $\alpha$  Polyclonal Antibody.. Secondary antibody was diluted at 1:20000