

## CD267 Polyclonal Antibody

Catalog_no :	AT5632
Applications :	WB,ELISA
Reactivity :	Human
Category :	抗原抗体
Size :	100µg/50µg/20µg
Gene_name :	TNFRSF13B
Protein_name :	Tumor necrosis factor receptor superfamily member 13B
Humangene_id :	<a href="#">23495</a>
Humanswissprot_no :	<a href="#">O14836</a>
Mousegene_id :	<a href="#">57916</a>
Mouseswissprot_no :	<a href="#">Q9ET35</a>
Ratgene_id :	
Ratswissprot_no :	
Immunogen :	The antiserum was produced against synthesized peptide derived from the Internal region of human TNFRSF13B. AA range:81-130
Specificity :	CD267 Polyclonal Antibody detects endogenous levels of CD267 protein.
Formulation :	Liquid in PBS containing 50% glycerol, 0.5% BSA and 0.02% sodium azide.
Source :	Rabbit
Dilution :	Western Blot: 1/500 - 1/2000. ELISA: 1/10000. Not yet tested in other applications.
Purification :	The antibody was affinity-purified from rabbit antiserum by affinity-chromatography using epitope-specific immunogen.
Concentration :	1 mg/ml
Storage_stability :	-20°C/1 year
Msds :	<a href="#">MSDS_Antibody.pdf</a>



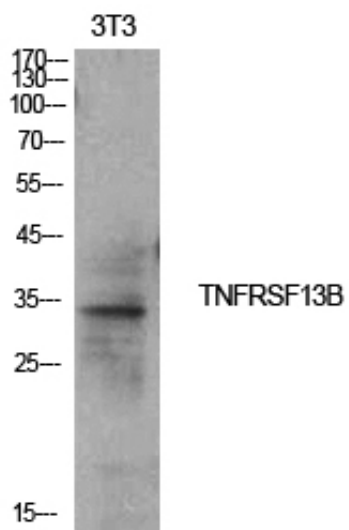
Other\_name : TNFRSF13B; TACI; Tumor necrosis factor receptor superfamily member 13B;  
Transmembrane activator and CAML interactor; CD267

---

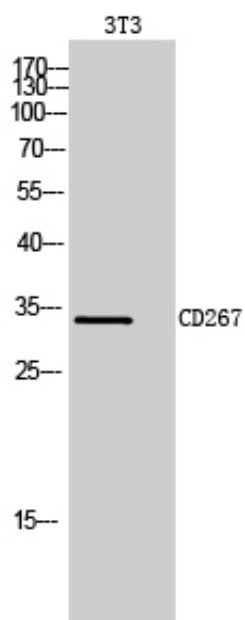
Molecular Weight : 32KD

---

## Product Images



Western Blot analysis of NIH-3T3 cells using CD267 Polyclonal Antibody.. Secondary antibody was diluted at 1:20000



Western Blot analysis of 3T3 cells using CD267 Polyclonal Antibody. Secondary antibody was diluted at 1:20000