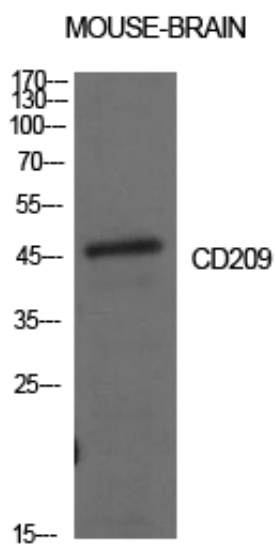




## CD209 Polyclonal Antibody

Catalog_no :	AT5633
Applications :	WB,ELISA
Reactivity :	Human,Mouse,Rat
Category :	抗原抗体
Size :	100µg/50µg/20µg
Gene_name :	CD209
Protein_name :	CD209 antigen
Humangene_id :	<a href="#">30835</a>
Humanswissprot_no :	<a href="#">Q9NNX6</a>
Ratgene_id :	
Ratswissprot_no :	
Immunogen :	Synthesized peptide derived from CD209 antigen at AA range: 261-310
Specificity :	CD209 Polyclonal Antibody detects endogenous levels of CD209 protein.
Formulation :	Liquid in PBS containing 50% glycerol, 0.5% BSA and 0.02% sodium azide.
Source :	Rabbit
Dilution :	Western Blot: 1/500 - 1/2000. ELISA: 1/10000. Not yet tested in other applications.
Purification :	The antibody was affinity-purified from rabbit antiserum by affinity-chromatography using epitope-specific immunogen.
Concentration :	1 mg/ml
Storage_stability :	-20°C/1 year
Msds :	MSDS_Antibody.pdf
Other_name :	CD209; CLEC4L; CD209 antigen; C-type lectin domain family 4 member L; Dendritic cell-specific ICAM-3-grabbing non-integrin 1; DC-SIGN; DC-SIGN1; CD209
Molecular Weight :	45KD

## Product Images



Western Blot analysis of mouse brain cells using CD209 Polyclonal Antibody. Antibody was diluted at 1:1000. Secondary antibody was diluted at 1:20000