

CD305 Polyclonal Antibody

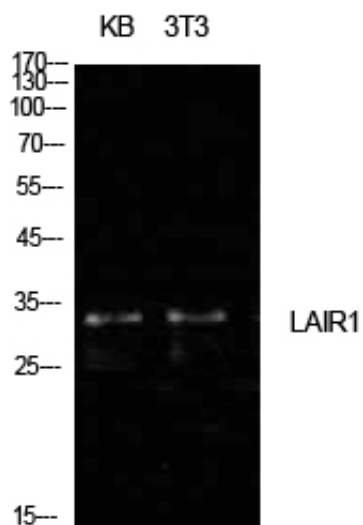
Catalog_no :	AT5634
Applications :	WB,ELISA
Reactivity :	Human
Category :	抗原抗体
Size :	100µg/50µg/20µg
Gene_name :	LAIR1
Protein_name :	Leukocyte-associated immunoglobulin-like receptor 1
Humangene_id	3903
:	
Humanswissprot	Q6GTX8
_no :	
Mousegene_id :	52855
Mouseswissprot	Q8BG84
_no :	
Ratgene_id :	574531
Ratswissprot_no	P0C1X9
:	
Immunogen :	The antiserum was produced against synthesized peptide derived from the Internal region of human LAIR1. AA range:21-70
Specificity :	CD305 Polyclonal Antibody detects endogenous levels of CD305 protein.
Formulation :	Liquid in PBS containing 50% glycerol, 0.5% BSA and 0.02% sodium azide.
Source :	Rabbit
Dilution :	Western Blot: 1/500 - 1/2000. ELISA: 1/10000. Not yet tested in other applications.
Purification :	The antibody was affinity-purified from rabbit antiserum by affinity-chromatography using epitope-specific immunogen.
Concentration :	1 mg/ml
Storage_stability	-20°C/1 year
:	
Msds :	MSDS_Antibody.pdf



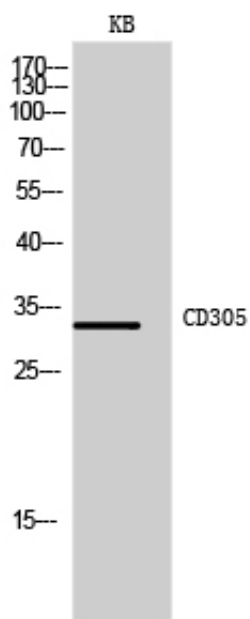
Other_name : LAIR1; CD305; Leukocyte-associated immunoglobulin-like receptor 1; LAIR-1; hLAIR1;
CD305

Molecular Weight : 32KD

Product Images



Western Blot analysis of KB, NIH-3T3 cells using CD305 Polyclonal Antibody.. Secondary antibody was diluted at 1:20000



Western Blot analysis of KB cells using CD305 Polyclonal Antibody. Secondary antibody was diluted at 1:20000