

CD192 Polyclonal Antibody

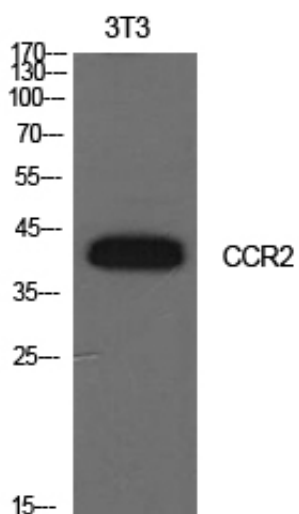
Catalog_no :	<u>AT5635</u>
Applications :	<u>WB,ELISA</u>
Reactivity :	<u>Human</u>
Category :	<u>抗原抗体</u>
Size :	<u>100µg/50µg/20µg</u>
Gene_name :	<u>CCR2</u>
Protein_name :	<u>C-C chemokine receptor type 2</u>
Humangene_id :	<u>729230</u>
Humanswissprot_no :	<u>P41597</u>
Mousegene_id :	<u>12772</u>
Mouseswissprot_no :	<u>P51683</u>
Ratgene_id :	<u>60463</u>
Ratswissprot_no :	<u>O55193</u>
Immunogen :	<u>The antiserum was produced against synthesized peptide derived from the N-terminal region of human CCR2. AA range:1-50</u>
Specificity :	<u>CD192 Polyclonal Antibody detects endogenous levels of CD192 protein.</u>
Formulation :	<u>Liquid in PBS containing 50% glycerol, 0.5% BSA and 0.02% sodium azide.</u>
Source :	<u>Rabbit</u>
Dilution :	<u>Western Blot: 1/500 - 1/2000. ELISA: 1/10000. Not yet tested in other applications.</u>
Purification :	<u>The antibody was affinity-purified from rabbit antiserum by affinity-chromatography using epitope-specific immunogen.</u>
Concentration :	<u>1 mg/ml</u>
Storage_stability :	<u>-20°C/1 year</u>
Msds :	<u>MSDS_Antibody.pdf</u>



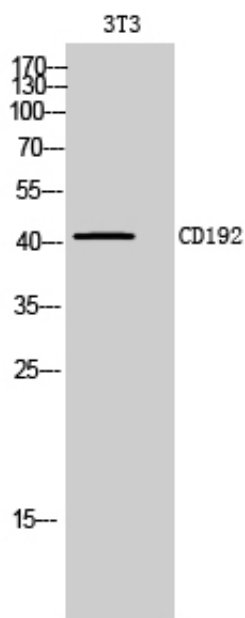
Other_name : CCR2; CMKBR2; C-C chemokine receptor type 2; C-C CKR-2; CC-CKR-2; CCR-2; CCR2;
Monocyte chemoattractant protein 1 receptor; MCP-1-R; CD192

Molecular Weight : 42KD

Product Images



Western Blot analysis of NIH-3T3 cells using CD192 Polyclonal Antibody.. Secondary antibody was diluted at 1:20000



Western Blot analysis of 3T3 cells using CD192 Polyclonal Antibody. Secondary antibody was diluted at 1:20000