

CD300d Polyclonal Antibody

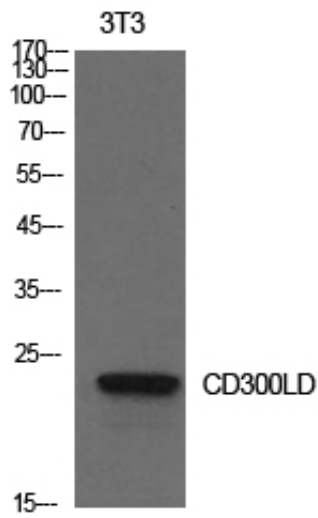
Catalog_no :	AT5636
Applications :	WB,ELISA
Reactivity :	Human
Category :	抗原抗体
Size :	100µg/50µg/20µg
Gene_name :	CD300LD
Protein_name :	CMRF35-like molecule 4
Humangene_id :	100131439
Humanswissprot_no :	Q6UXZ3
Mousegene_id :	217305
Ratgene_id :	
Ratswissprot_no :	
Immunogen :	The antiserum was produced against synthesized peptide derived from the Internal region of human CD300LD. AA range:61-110
Specificity :	CD300d Polyclonal Antibody detects endogenous levels of CD300d protein.
Formulation :	Liquid in PBS containing 50% glycerol, 0.5% BSA and 0.02% sodium azide.
Source :	Rabbit
Dilution :	Western Blot: 1/500 - 1/2000. ELISA: 1/10000. Not yet tested in other applications.
Purification :	The antibody was affinity-purified from rabbit antiserum by affinity-chromatography using epitope-specific immunogen.
Concentration :	1 mg/ml
Storage_stability :	-20°C/1 year
Msds :	MSDS_Antibody.pdf
Other_name :	CD300LD; CD300D; CMRF35A4; CMRF35-like molecule 4; CLM-4; CD300 antigen-like family member D; CMRF35-A4; CD300d



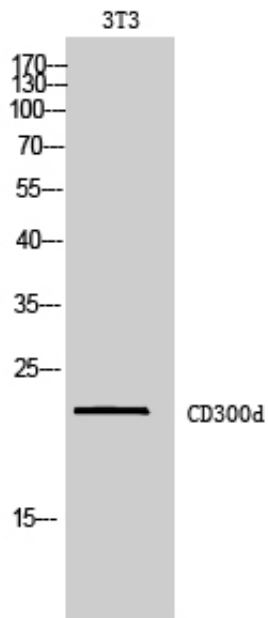
Molecular
Weight :

22KD

Product Images



Western Blot analysis of NIH-3T3 cells using CD300d Polyclonal Antibody.. Secondary antibody was diluted at 1:20000



Western Blot analysis of 3T3 cells using CD300d Polyclonal Antibody. Secondary antibody was diluted at 1:20000