

## CD315 Polyclonal Antibody

Catalog_no :	<u>AT5637</u>
Applications :	<u>WB,IHC-p,ELISA</u>
Reactivity :	<u>Human,Mouse,Rat</u>
Category :	<u>抗原抗体</u>
Size :	<u>100µg/50µg/20µg</u>
Gene_name :	<u>PTGFRN</u>
Protein_name :	<u>Prostaglandin F2 receptor negative regulator</u>
Humangene_id	<u><a href="#">5738</a></u>
:	<u></u>
Humanswissprot	<u><a href="#">Q9P2B2</a></u>
_no :	<u></u>
Mousegene_id :	<u><a href="#">19221</a></u>
Mouseswissprot	<u><a href="#">Q9WV91</a></u>
_no :	<u></u>
Ratgene_id :	<u><a href="#">29602</a></u>
Ratswissprot_no	<u><a href="#">Q62786</a></u>
:	<u></u>
Immunogen :	<u>The antiserum was produced against synthesized peptide derived from the Internal region of human PTGFRN. AA range:601-650</u>
Specificity :	<u>CD315 Polyclonal Antibody detects endogenous levels of CD315 protein.</u>
Formulation :	<u>Liquid in PBS containing 50% glycerol, 0.5% BSA and 0.02% sodium azide.</u>
Source :	<u>Rabbit</u>
Dilution :	<u>Western Blot: 1/500 - 1/2000. IHC-p: 1:100-1:300. ELISA: 1/10000. Not yet tested in other applications.</u>
Purification :	<u>The antibody was affinity-purified from rabbit antiserum by affinity-chromatography using epitope-specific immunogen.</u>
Concentration :	<u>1 mg/ml</u>
Storage_stability	<u>-20°C/1 year</u>
:	<u></u>
Msds :	<u>MSDS_Antibody.pdf</u>



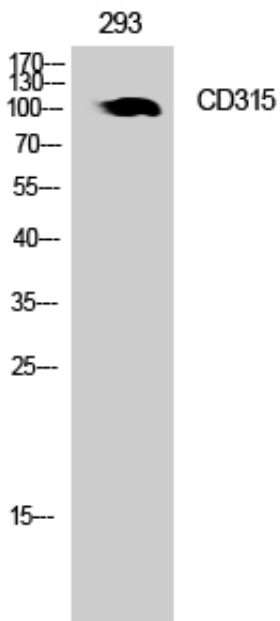
Other\_name : PTGFRN; CD9P1; EWIF; FPRP; KIAA1436; Prostaglandin F2 receptor negative regulator; CD9 partner 1; CD9P-1; Glu-Trp-Ile EWI motif-containing protein F; EWI-F; Prostaglandin F2-alpha receptor regulatory protein; Prostaglandin F2-alpha receptor-associated protein; CD315

---

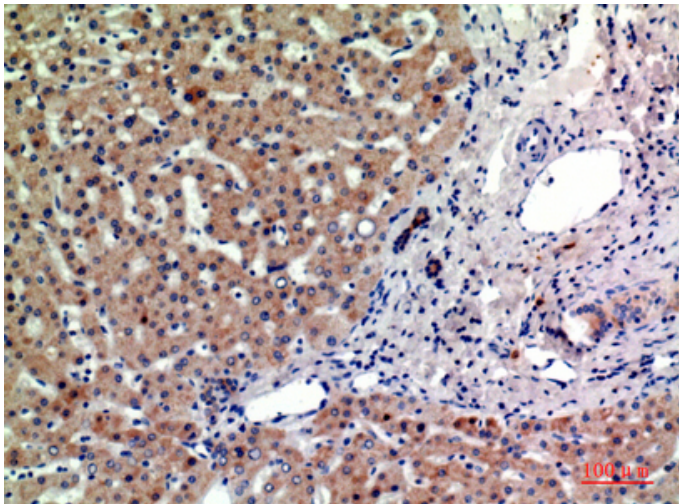
Molecular Weight : 98KD

---

## Product Images



Western Blot analysis of 293 cells using CD315 Polyclonal Antibody.. Secondary antibody was diluted at 1:20000



Immunohistochemical analysis of paraffin-embedded human-liver, antibody was diluted at 1:200