

CD235a Polyclonal Antibody

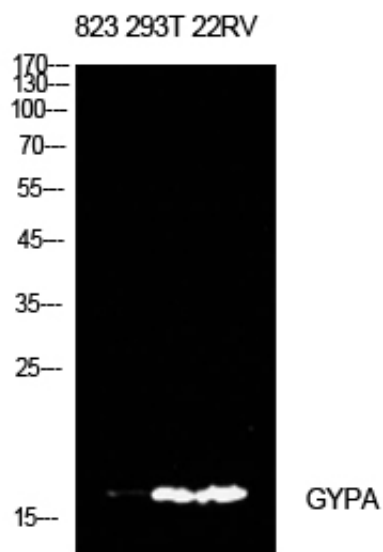
Catalog_no :	AT5638
Applications :	WB,IHC-p,ELISA
Reactivity :	Human
Category :	抗原抗体
Size :	100µg/50µg/20µg
Gene_name :	GYPA
Protein_name :	Glycophorin-A
Humangene_id :	2993
Humanswissprot_no :	P02724
Mousegene_id :	14934
Mouseswissprot_no :	P14220
Ratgene_id :	
Ratswissprot_no :	
Immunogen :	The antiserum was produced against synthesized peptide derived from the Internal region of human GYPA. AA range:41-90
Specificity :	CD235a Polyclonal Antibody detects endogenous levels of CD235a protein.
Formulation :	Liquid in PBS containing 50% glycerol, 0.5% BSA and 0.02% sodium azide.
Source :	Rabbit
Dilution :	Western Blot: 1/500 - 1/2000. IHC-p: 1:100-1:300. ELISA: 1/10000. Not yet tested in other applications.
Purification :	The antibody was affinity-purified from rabbit antiserum by affinity-chromatography using epitope-specific immunogen.
Concentration :	1 mg/ml
Storage_stability :	-20°C/1 year
Msds :	MSDS_Antibody.pdf



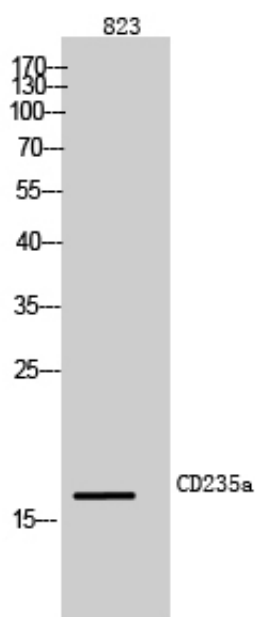
Other_name : GYPA; GPA; Glycophorin-A; MN sialoglycoprotein; PAS-2; Sialoglycoprotein alpha;
CD235a

Molecular Weight : 16KD

Product Images

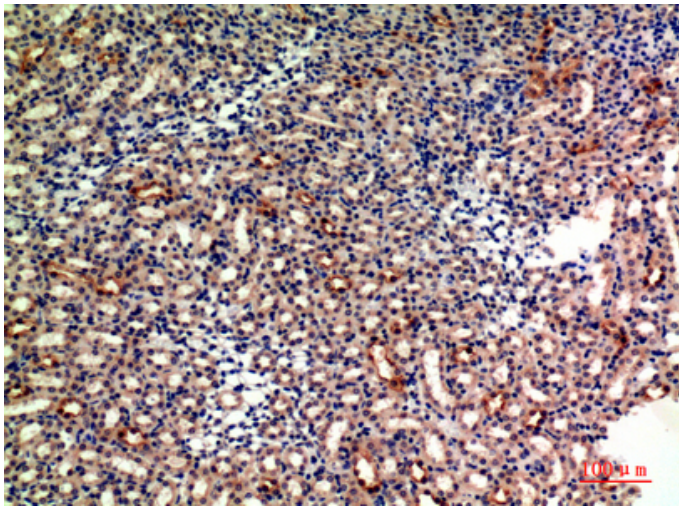
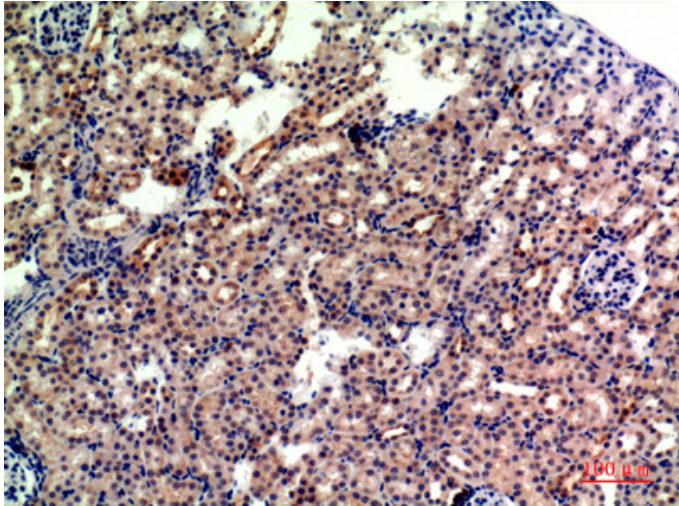


Western Blot analysis of 823, 293T, 22RV cells using CD235a Polyclonal Antibody. Antibody was diluted at 1:500. Secondary antibody was diluted at 1:20000



Western Blot analysis of 823 cells using CD235a Polyclonal Antibody diluted at 1 : 500. Secondary antibody was diluted at 1:20000

Immunohistochemical analysis of paraffin-embedded mouse-kidney, antibody was diluted at 1:200



Immunohistochemical analysis of paraffin-embedded mouse-kidney, antibody was diluted at 1:200