

CD249 Polyclonal Antibody

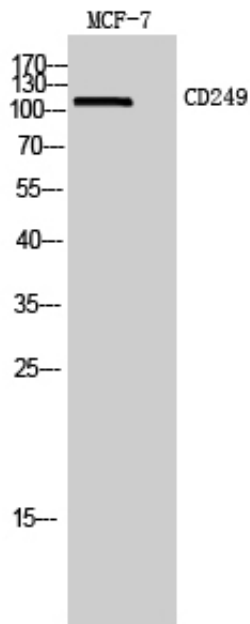
Catalog_no :	<u>AT5639</u>
Applications :	<u>WB,IHC-p,ELISA</u>
Reactivity :	<u>Human,Mouse,Rat</u>
Category :	<u>抗原抗体</u>
Size :	<u>100µg/50µg/20µg</u>
Gene_name :	<u>ENPEP</u>
Protein_name :	<u>Glutamyl aminopeptidase</u>
Humangene_id	<u>2028</u>
:	<u></u>
Humanswissprot	<u>Q07075</u>
_no :	<u></u>
Mousegene_id :	<u>13809</u>
Mouseswissprot	<u>P16406</u>
_no :	<u></u>
Ratgene_id :	<u>64017</u>
Ratswissprot_no	<u>P50123</u>
:	<u></u>
Immunogen :	<u>The antiserum was produced against synthesized peptide derived from the Internal region of human ENPEP. AA range:671-720</u>
Specificity :	<u>CD249 Polyclonal Antibody detects endogenous levels of CD249 protein.</u>
Formulation :	<u>Liquid in PBS containing 50% glycerol, 0.5% BSA and 0.02% sodium azide.</u>
Source :	<u>Rabbit</u>
Dilution :	<u>Western Blot: 1/500 - 1/2000. IHC-p: 1:100-1:300. ELISA: 1/10000. Not yet tested in other applications.</u>
Purification :	<u>The antibody was affinity-purified from rabbit antiserum by affinity-chromatography using epitope-specific immunogen.</u>
Concentration :	<u>1 mg/ml</u>
Storage_stability	<u>-20°C/1 year</u>
:	<u></u>
Msds :	<u>MSDS_Antibody.pdf</u>



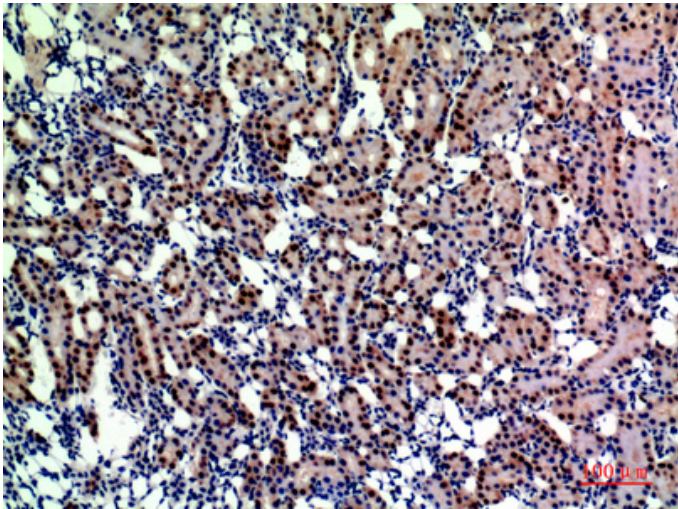
Other_name : ENPEP; Glutamyl aminopeptidase; EAP; Aminopeptidase A; AP-A; Differentiation antigen gp160; CD249

Molecular Weight : 110KD

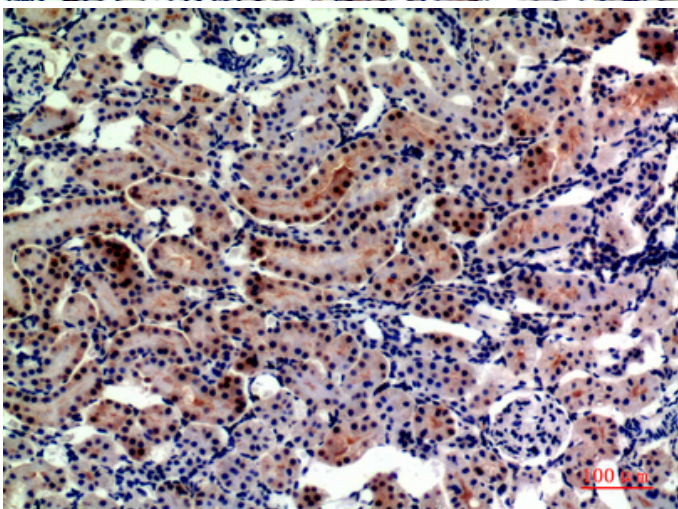
Product Images



Western Blot analysis of MCF7 cells using CD249 Polyclonal Antibody.. Secondary antibody was diluted at 1:20000



Immunohistochemical analysis of paraffin-embedded rat-kidney, antibody was diluted at 1:200



Immunohistochemical analysis of paraffin-embedded rat-kidney, antibody was diluted at 1:200