

## CD206 Polyclonal Antibody

Catalog_no :	AT5640
Applications :	WB,IHC-p,ELISA
Reactivity :	Human
Category :	抗原抗体
Size :	100µg/50µg/20µg
Gene_name :	MRC1
Protein_name :	Macrophage mannose receptor 1
Humangene_id :	<a href="#">4360</a>
Humanswissprot_no :	<a href="#">P22897</a>
Mousegene_id :	<a href="#">17533</a>
Mouseswissprot_no :	<a href="#">Q61830</a>
Ratgene_id :	
Ratswissprot_no :	
Immunogen :	The antiserum was produced against synthesized peptide derived from the Internal region of human MRC1. AA range:341-390
Specificity :	CD206 Polyclonal Antibody detects endogenous levels of CD206 protein.
Formulation :	Liquid in PBS containing 50% glycerol, 0.5% BSA and 0.02% sodium azide.
Source :	Rabbit
Dilution :	Western Blot: 1/500 - 1/2000. IHC-p: 1:100-1:300. ELISA: 1/10000. Not yet tested in other applications.
Purification :	The antibody was affinity-purified from rabbit antiserum by affinity-chromatography using epitope-specific immunogen.
Concentration :	1 mg/ml
Storage_stability :	-20°C/1 year
Msds :	MSDS_Antibody.pdf



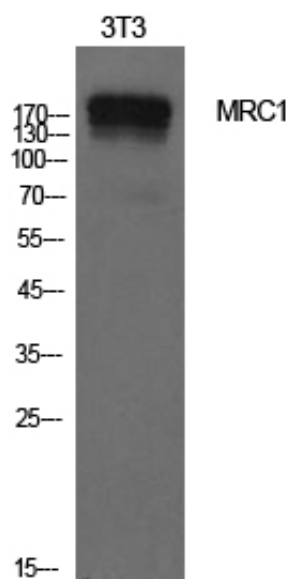
Other\_name : MRC1; CLEC13D; CLEC13DL; MRC1L1; Macrophage mannose receptor 1; MMR; C-type lectin domain family 13 member D; C-type lectin domain family 13 member D-like; Macrophage mannose receptor 1-like protein 1; CD206

---

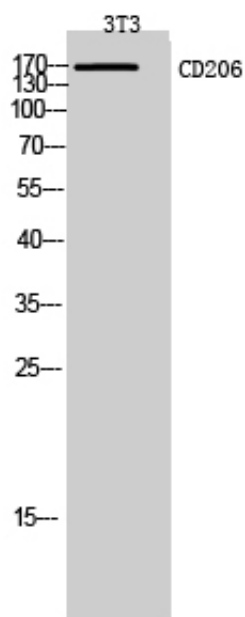
Molecular Weight : 170KD

---

## Product Images



Western Blot analysis of NIH-3T3 cells using CD206 Polyclonal Antibody.. Secondary antibody was diluted at 1:20000



Western Blot analysis of 3T3 cells using CD206 Polyclonal Antibody. Secondary antibody was diluted at 1:20000

Immunohistochemical analysis of paraffin-embedded human-heart, antibody was diluted at 1:200

