

## EMAP II Polyclonal Antibody

Catalog_no :	AT5643
Applications :	WB,ELISA
Reactivity :	Human
Category :	抗原抗体
Size :	100µg/50µg/20µg
Gene_name :	AIMP1
Protein_name :	Aminoacyl tRNA synthase complex-interacting multifunctional protein 1
Humangene_id :	<a href="#">9255</a>
Humanswissprot_no :	<a href="#">Q12904</a>
Mousegene_id :	
Mouseswissprot_no :	<a href="#">P31230</a>
Ratgene_id :	
Ratswissprot_no :	
Immunogen :	The antiserum was produced against synthesized peptide derived from the Internal region of human AIMP1. AA range:91-140
Specificity :	EMAP II Polyclonal Antibody detects endogenous levels of EMAP II protein.
Formulation :	Liquid in PBS containing 50% glycerol, 0.5% BSA and 0.02% sodium azide.
Source :	Rabbit
Dilution :	Western Blot: 1/500 - 1/2000. ELISA: 1/10000. Not yet tested in other applications.
Purification :	The antibody was affinity-purified from rabbit antiserum by affinity-chromatography using epitope-specific immunogen.
Concentration :	1 mg/ml
Storage_stability :	-20°C/1 year
Msds :	<a href="#">MSDS_Antibody.pdf</a>



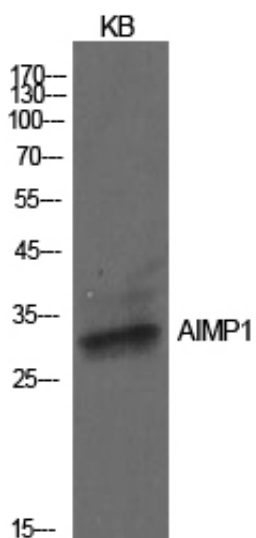
Other\_name : AIMP1; EMAP2; SCYE1; Aminoacyl tRNA synthase complex-interacting multifunctional protein 1; Multisynthase complex auxiliary component p43

---

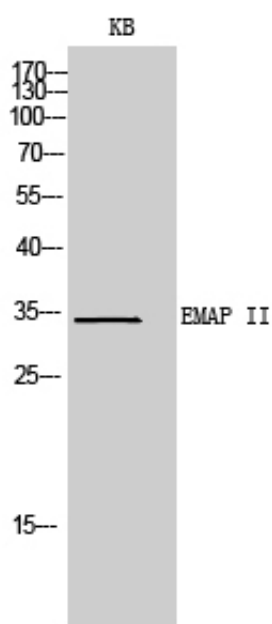
Molecular Weight : 34KD

---

## Product Images



Western Blot analysis of KB cells using EMAP II Polyclonal Antibody.. Secondary antibody was diluted at 1:20000



Western Blot analysis of KB cells using EMAP II Polyclonal Antibody. Secondary antibody was diluted at 1:20000